

# TESA Spirit Levels

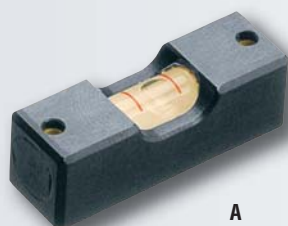


No. 05331350 to No. 05331352 in a wooden case, others models in cardboard boxes



	mm/m	mm	For shafts mm
<b>Model A</b>	<i>Spirit levels with a prismatic measuring face, Ω-shaped</i>		
05331650	1,0	100 x 30 x 35	17 ÷ 80
05331651	0,3	100 x 30 x 35	17 ÷ 80
05331652	0,3	150 x 30 x 35	17 ÷ 80
05331653	0,3	200 x 30 x 35	17 ÷ 80
<b>Model B</b>	<i>Tubular spirit levels with a flat measuring face</i>		
05331250	0,1	80 x 9, Ø 16	
05331251	0,3	80 x 9, Ø 16	
05331252	0,1	100 x 10, Ø 20	
05331253	0,3	100 x 10, Ø 20	
05331254	0,05	150 x 11, Ø 22	
05331255	0,1	150 x 11, Ø 22	
05331256	0,3	150 x 11, Ø 22	
05331257	0,05	200 x 12, Ø 22	
05331258	0,1	200 x 12, Ø 22	
05331259	0,3	200 x 12, Ø 22	
<b>Model C</b>	<i>Spirit levels for transmission shafts with side viewing slots</i>		
05331350	0,05	100 x 30 x 35	17 ÷ 80
05331351	0,3	100 x 30 x 35	17 ÷ 80
05331352	0,1	200 x 30 x 35	17 ÷ 80

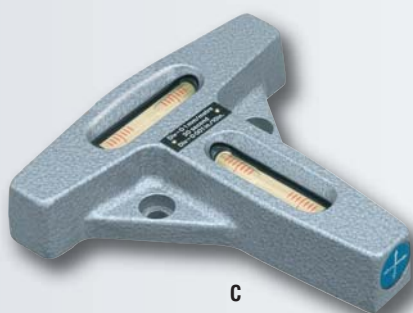
# TESA Screw-On Spirit Levels



A



B



C

		mm/m	I x L mm	mm	H mm
<b>Model A</b>	<i>Screw-on spirit levels with a longitudinal vial</i>				
<b>05331400</b>		2 ÷ 5	30 x 10		10
<b>05331401</b>		2 ÷ 5	40 x 10		11
<b>05331402</b>		1,0	50 x 10		12
<b>05331403</b>		2 ÷ 5	50 x 10		12
<b>05331404</b>		1,0	60 x 12		14
<b>05331405</b>		2 ÷ 5	60 x 12		14
<b>05331406</b>		0,3	60 x 12		14
<b>05331407</b>		2 ÷ 5	80 x 15		18
<b>05331408</b>		0,1	80 x 15		18
<b>05331409</b>		0,3	80 x 15		18
<b>05331410</b>		1,0	100 x 18		22
<b>05331411</b>		0,1	100 x 18		22
<b>05331412</b>		0,3	100 x 18		22
<b>05331413</b>		0,1	120 x 18		22
<b>05331414</b>		0,3	120 x 18		22
<b>05331415</b>		0,1	150 x 18		22
<b>05331416</b>		0,3	150 x 18		22
<b>Model B</b>	<i>Circular screw-on spirit levels with both a longitudinal and cross vials</i>				
<b>05331500</b>		2 ÷ 5		40	11
<b>05331501</b>		2 ÷ 5		60	13
<b>05331502</b>		0,3		60	13
<b>05331503</b>		0,3		80	18
<b>Model C</b>	<i>T-shaped screw-on spirit levels with both a longitudinal and cross vials</i>				
<b>05331550</b>		0,1	80 x 65		17
<b>05331551</b>		0,3	80 x 65		17
<b>05331552</b>		0,02	150 x 147		30
<b>05331553</b>		0,05	150 x 147		30

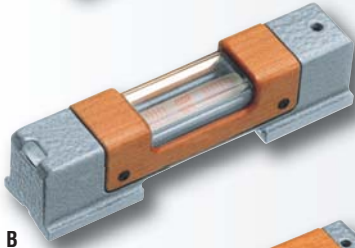


## TESA Precision Spirit Levels

Used for checking and aligning flat or cylindrical surfaces in the horizontal position.



A



B



C



D



mm/m

mm

For shafts  
mm

*Precision spirit level with insulating pad*

<b>05331600</b>	0,05	100 x 45 x 35	19 ÷ 120	A
-----------------	------	---------------	----------	---

*Precision spirit levels with insulating grip and vial protection, side viewing slots*

<b>05331050</b>	0,02	100 x 32 x 35	17 ÷ 84	B
-----------------	------	---------------	---------	---

<b>05331051</b>	0,1	100 x 32 x 35	17 ÷ 84	B
-----------------	-----	---------------	---------	---

<b>05331052</b>	0,3	100 x 32 x 35	17 ÷ 84	B
-----------------	-----	---------------	---------	---

<b>05331054</b>	0,02	150 x 35 x 38	17 ÷ 94	C
-----------------	------	---------------	---------	---

<b>05331055</b>	0,04	150 x 35 x 38	17 ÷ 94	C
-----------------	------	---------------	---------	---

<b>05331056</b>	0,05	150 x 35 x 38	17 ÷ 94	C
-----------------	------	---------------	---------	---

<b>05331057</b>	0,1	150 x 35 x 38	17 ÷ 94	C
-----------------	-----	---------------	---------	---

<b>05331058</b>	0,02	200 x 40 x 42	19 ÷ 108	C
-----------------	------	---------------	----------	---

<b>05331059</b>	0,04	200 x 40 x 42	19 ÷ 108	C
-----------------	------	---------------	----------	---

<b>05331060</b>	0,05	200 x 40 x 42	19 ÷ 108	C
-----------------	------	---------------	----------	---

<b>05331061</b>	0,1	200 x 40 x 42	19 ÷ 108	C
-----------------	-----	---------------	----------	---

<b>05331062</b>	0,3	200 x 40 x 42	19 ÷ 108	C
-----------------	-----	---------------	----------	---

<b>05331063</b>	0,02	250 x 45 x 42	19 ÷ 120	C
-----------------	------	---------------	----------	---

<b>05331064</b>	0,04	300 x 50 x 42	22 ÷ 135	C
-----------------	------	---------------	----------	---

<b>05331065</b>	0,05	300 x 50 x 42	22 ÷ 135	C
-----------------	------	---------------	----------	---

*Crank pin spirit levels with 2 prismatic and intersecting slots*

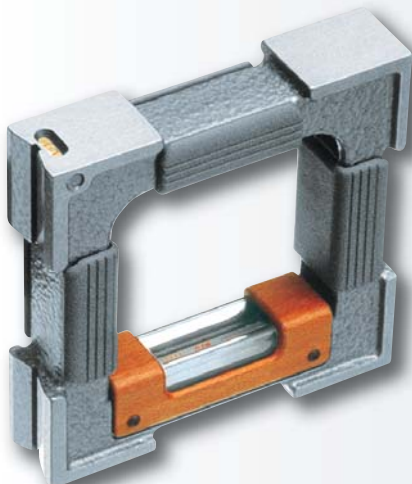
<b>05331100</b>	0,05	60 x 42 x 32	19 ÷ 108	D
-----------------	------	--------------	----------	---

<b>05331101</b>	0,05	90 x 42 x 32	19 ÷ 108	D
-----------------	------	--------------	----------	---

<b>05331102</b>	0,3	90 x 42 x 32	19 ÷ 108	D
-----------------	-----	--------------	----------	---

## TESA Precision Spirit Levels with a Frame

For checking and levelling flat or cylindrical surfaces in both horizontal and vertical positions – Insulating grips and vial protection – Side viewing slots.



mm/m

mm

For shafts  
mm

<b>05331200</b>	0,04	100 x 100 x 32	17 ÷ 84
-----------------	------	----------------	---------

<b>05331201</b>	0,05	100 x 100 x 32	17 ÷ 84
-----------------	------	----------------	---------

<b>05331202</b>	0,1	100 x 100 x 32	17 ÷ 84
-----------------	-----	----------------	---------

<b>05331203</b>	0,04	150 x 150 x 35	17 ÷ 94
-----------------	------	----------------	---------

<b>05331204</b>	0,05	150 x 150 x 35	17 ÷ 94
-----------------	------	----------------	---------

<b>05331205</b>	0,1	150 x 150 x 35	17 ÷ 94
-----------------	-----	----------------	---------

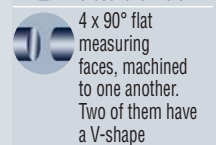
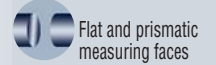
<b>05331206</b>	0,02	200 x 200 x 40	19 ÷ 108
-----------------	------	----------------	----------

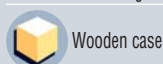
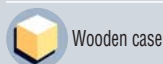
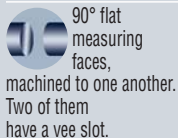
<b>05331207</b>	0,04	200 x 200 x 40	19 ÷ 108
-----------------	------	----------------	----------

<b>05331208</b>	0,05	200 x 200 x 40	19 ÷ 108
-----------------	------	----------------	----------

<b>05331209</b>	0,1	200 x 200 x 40	19 ÷ 108
-----------------	-----	----------------	----------

<b>05331210</b>	0,05	250 x 250 x 45	19 ÷ 120
-----------------	------	----------------	----------





## TESA Precision Spirit Levels Magnetic Square Models

For inspecting and levelling flat or cylindrical surfaces in both horizontal and vertical positions – Attach magnetically on such surfaces – Fitted with insulating handle.

No	mm/m	mm	For shafts mm
05331000	0,02	150 x 150 x 40	19 ÷ 108
05331001	0,04	150 x 150 x 40	19 ÷ 108
05331002	0,05	150 x 150 x 40	19 ÷ 108



## TESA Precision Spirit Level with Micrometer Element

For checking surface flatness and inclinations – With insulating pads.

No	mm/m	mm	For shafts mm
05331450	0,02	150 x 45 x 45	19 ÷ 120



## TESA Protractor Spirit Inclinator

No	Vial	mm	For shafts mm
05331300	4 x 90° 1°	7 ÷ 17'	180 x 75 x 22 15 ÷ 55

