



0 to 30 mm

Mobile measuring bolt mounted on a plain bearing, also fitted with a semi-circular releasing disc plate.

Measuring inserts supplied in pairs. One is tighten on the measuring bolt, the other on the fixed anvil using one indexing pin with 1 mm dia. and two M1,4 clamping screws.

Resting table with vertical and lengthwise adjustment facility
Table surface area: 24 x 9,5 mm.
Setting range: 15 mm upright, 14 mm lengthwise.
With tightening screws.

Sensor (must be ordered separately), e.g. dial gauge, electronic or precision indicator, analogue or digital probe with a 8 mm dia. shaft.

Main body in cast iron. Other parts in hardened and ground steel.

Produced by used sensor. The SH.30 model has no spring-loaded measuring force.

Accuracy is usually influenced by the measuring instrument as well as both flatness and parallelism of the measuring faces of used inserts.

Clamping precision
Tolerance in flatness of both clamping faces: 0,05 mm.
Tolerance for the axial position of both indexing pins against bolt axis: 0,05 mm.
Tolerance for the parallel position of the table surface against bolt axis: 0,05 mm.

Also see drawing

2,1 kg

Shipping packaging

Declaration of conformity

INTERAPID Small Bench SHE.30 or SHE.35

The ideal solution for precise inspection of small part series dedicated to watchmaking and precision mechanics – Fast in measuring and changing from a part to another – Wide choice of measuring inserts specially designed for the broadest variety of metrology applications.



INTERAPID SHE.30 for External Dimensions



B 122/03360300



B 111/03360301



B 112/03360302



B 123/03360307

No

=

03330004 INTERAPID small measuring bench SHE.30 for external dimensions, without measuring inserts

Tungsten carbide tipped measuring inserts available in pairs

03360300 Flat measuring face, 3,5 mm long, 0,4 mm thick*

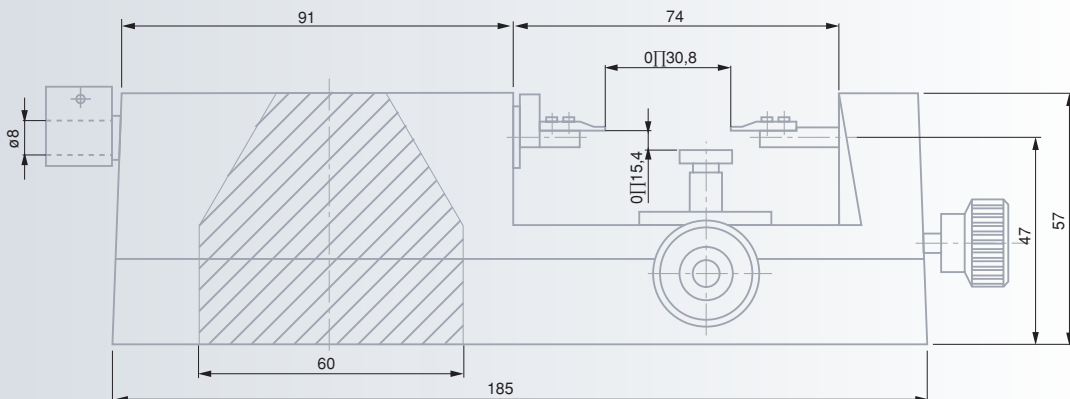
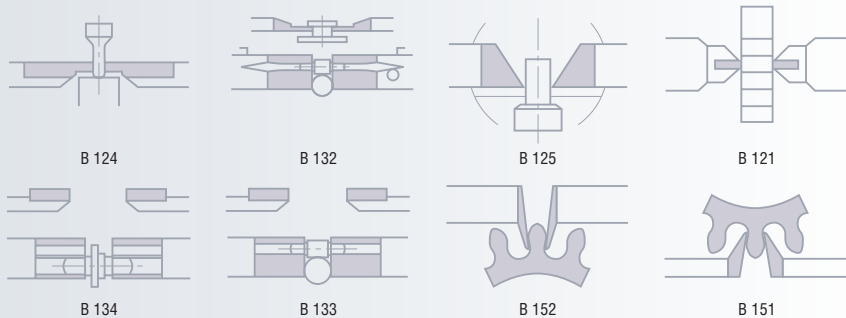
03360301 Cylindrical insert with a flat measuring face, 1,2 mm diameter

03360302 Cylindrical insert with a flat measuring face, 2 mm diameter

03360307 Knife-edged measuring face, 3,5 mm long, 0,05 mm thick, 40°

* Measuring inserts with thickness to 0,1 mm or 1,5 mm also available upon request

Measuring inserts (For a detailed description, see on page G-28)



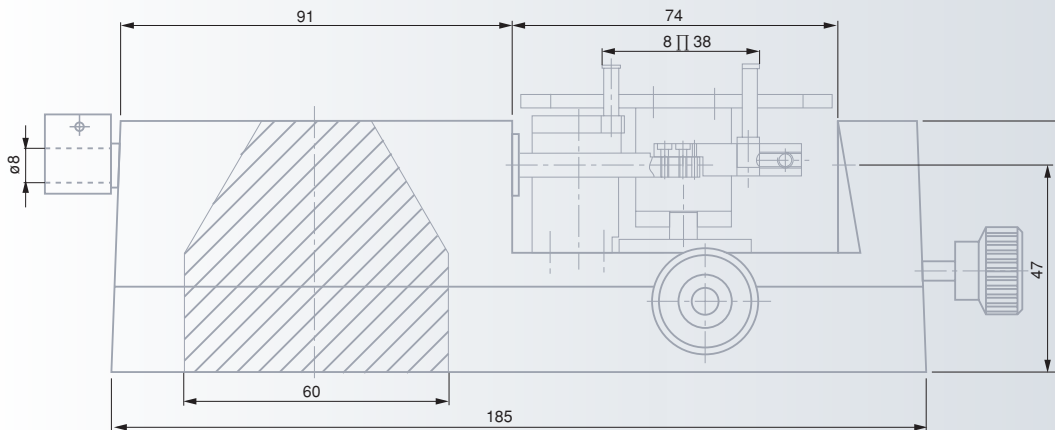
INTERAPID SHE.35 for Internal Dimensions



03330006 INTERAPID small bench SHE.35 for internal dimensions, with measuring inserts included.

8 ÷ 38 mm

Inserts with special design also available on request



30 mm



8 up to 38 mm (std accessory)



Mobile measuring bolt mounted on a plain bearing, also fitted with a retracting ball-shaped handle.

Measuring inserts supplied in pairs. Can be exchanged. Provided with a 4 mm dia. fixing shaft.

Height adjustable resting table

Table surface area: 40 x 70 mm.
Setting range: 8 mm.
1 tightening screw.
Sensor (must be ordered separately), e.g. dial gauge, electronic or precision indicator, analogue or digital probe with a 8 mm dia. clamping shaft.



Main body in cast iron. Other parts in hardened and ground steel. Inserts with carbide measuring faces.



Produced by used sensor. The bench has no spring-loaded measuring force.



Accuracy is usually influenced by the measuring instrument as well as the type of used inserts.



2,3 kg



Shipping packaging



Declaration of conformity



0 to 82 mm

Insert retraction over 26 mm. 8 h6 clamping bore for the sensor.

Cast-iron base. Other components in hardened and ground steel.

Sensor dependent accuracy

Produced through the sensor (not included)

2,5 kg

Wooden case

Declaration of conformity

Tables and inserts must be ordered together with the small bench as accessories. Correct assembly is ensured by the manufacturer for even greater accuracy.



0 to 50 mm

Insert retraction over 10 mm (using the lift lever). Spindle travel: 15 mm. 8 h6 clamping bore for the sensor.

Cast-iron base. Other components in hardened and ground steel.

Sensor dependent accuracy

Produced through the sensor (not included)

2,8 kg

Wooden case

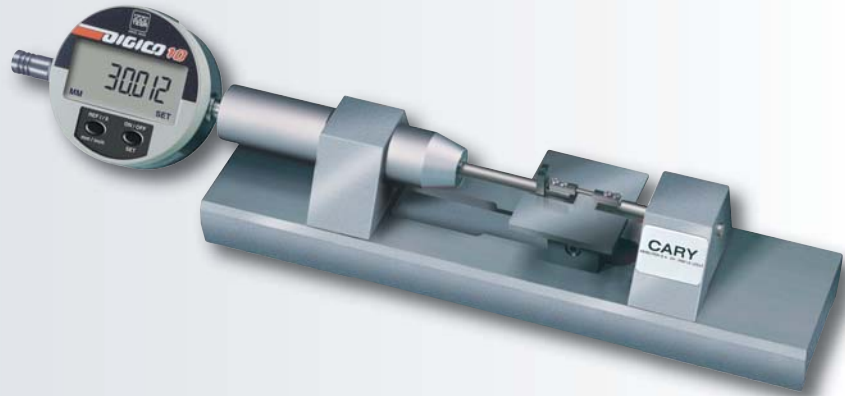
Declaration of conformity

Tables and inserts must be ordered together with the small bench as accessories. Correct assembly is ensured by the manufacturer for even greater accuracy.

TESA CARY Small Benches

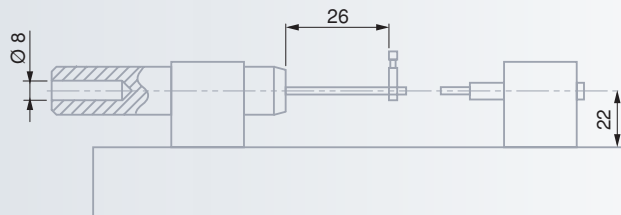
TESA CARY BML with fixed anvil

Specially designed for fast and accurate measurement of parts used in microtechnique.



S33060776

TESA CARY small bench BML with fixed anvil.
Accessories and dial gauge not included.



TESA CARY BMS with setting spindle on anvil side

Non-rotative spindle that can be locked in any position.

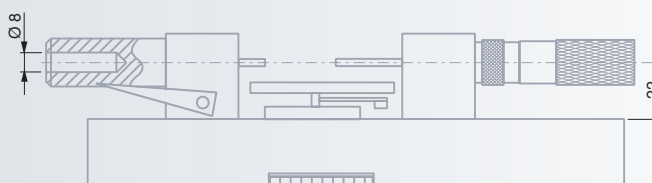
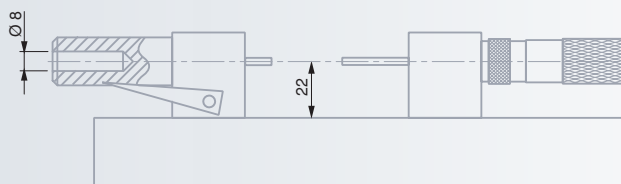


S33060597

TESA CARY small bench BMS.
Accessories and sensor not included.

S33060599

TESA CARY small bench BMS GT.
Accessories and sensor not included.
Provided with a removable, height adjustable resting table over 8 mm.



TESA CARY BMH with micrometer element

This bench has a mounted micrometer head with non-rotative, straight guided spindle. The analogue indication features additional graduations with lock by steps of 0,01 mm ensuring quick and reliable positioning of the micrometer. This ingenious device guarantees a positioning accuracy better than 1 µm with a repeatability to < 0,5 µm.



Nº

=

S33060038

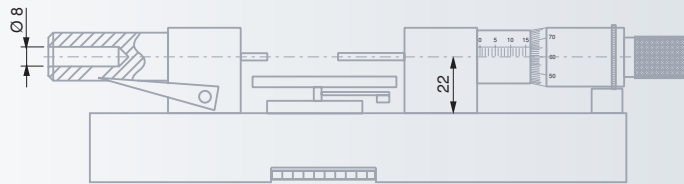
TESA CARY small bench BMH,
accessories and sensor not included.

S33060007

TESA CARY small bench BMH IN,
accessories and sensor not included.
(Analogue indication specially graduated for inside measurement).

S33060600

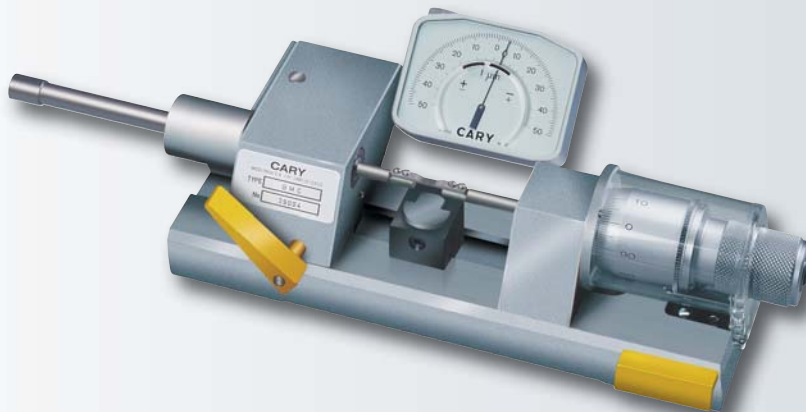
TESA CARY small bench BMH GT,
accessories and sensor not included.
This model is provided with a removable table with adjustable height over 8 mm using the lever system.



TESA CARY BMC along with micrometer element and micro-comparator

Derived from the BMH model, this small bench has the following key features:

- Analogue indication through the TESA CARY MCA8-2 micro-comparator positioned right above the measuring point.
- Possible assembly of a TESA inductive probe or electronic indicator.



Nº

=

S33060534

TESA CARY BMC small bench with MCA8-2 micro-comparator,
but without any other accessories.



Insert retraction over 10 mm (using the lift lever). Spindle travel: 15 mm. Spindle lock by steps of 0,01 mm. Plexiglas tube to protect the micrometer. 8 h6 clamping bore for the sensor.



Cast-iron base. Other components in hardened and ground steel.



Sensor dependent accuracy. Measuring force produced through the sensor (not included).

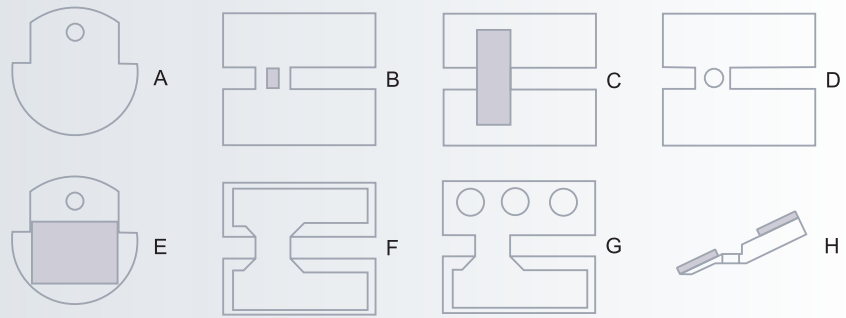


Declaration of conformity. Tables and inserts must be ordered together with the measuring bench as accessories. Correct assembly ensured by the manufacturer for even greater accuracy.





Resting tables alone



No	Type	Description	
S33060526	BT 1	Small table with a 16 mm diameter	A
S33060524	BT 2	H-shaped table with tungsten carbide resting face (H = 2 mm)	B
S33060523	BT 4	H-shaped table with tungsten carbide long plate (H = 2 mm)	C
S33050416	BT 5	H-shaped steel table, hardened	D
S33060522	BT 6	Small table, 16 mm diameter, with tungsten carbide plate (H = 2 mm)	E
S33050417	BT 8	H-shaped steel table with borders, hardened	F
S33060521	BT 9	H-shaped steel table with 3 cups and borders on the front face, hardened	G
S33060520	BT 10	Tilted tungsten carbide table	H
S33060525		Common table support provided as standard accessory	








Resting Tables with height adjustable support

No	Type	Description	
S33060519	BT 21	H-shaped table with tungsten carbide resting face (H = 2 mm)	B
S33060518	BT 41	H-shaped table with tungsten carbide long plate (H = 2 mm)	C
S33050418	BT 51	H-shaped steel table, hardened	D
S33060517	BT 81	H-shaped steel table with borders, hardened	F
S33060516	BT 101	Tilted tungsten carbide table	H

Paired inserts for external measuring

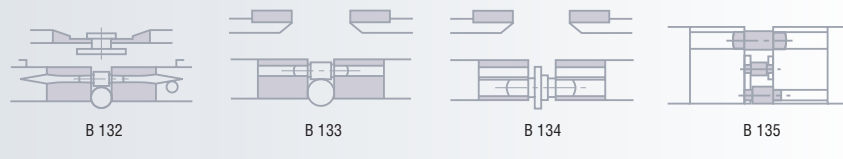
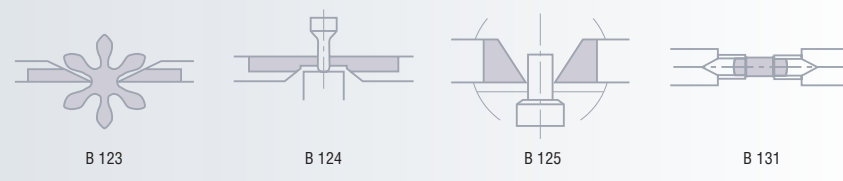
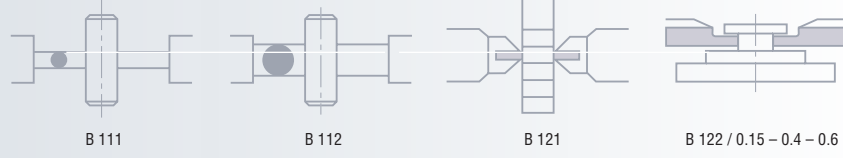


					
			Main characteristics	Applications (examples)	Convenient tables
S33010576	B111	Cylindrical, 1,2 mm in diameter, tungsten carbide.	Measure diameters on cylindrical parts, e.g. staffs, arbors, rods, pins, balls, spheres.	A-C-D-F-G	
S33010071	B112	Cylindrical, 2 mm in diameter, tungsten carbide.	Same as B111, but plus thickness of prismatic parts, bars, washers, blades.	A-C-D-F-G	
S33010056	B121	Knife-shaped, 0,4 mm wide, 2 mm thick, fitted with diamond pads.	Measure diameters on watch stones. Tracked counter-pivots. Mounted on a wire.	C-H	
On request	B122-0,4	Flat, 3,5 mm wide, < 0,4 mm thick, tungsten carbide.	Measure diameters and thickness on watch stones, washers etc.	A-C-D-F-G	
S33010060	B122	Same as above, but 0,4 mm thick.	Same as above	A-C-D-F-G	
Sur demande	B122+0,4	Same as above, but >0,6 mm thick.	Same as above	A-C-D-F-G	
S33010377	B123	Knife-shaped, 3,5 mm wide, 0,05 mm thick, 40° angle, tungsten carbide.	Measure diameters on staff pivots of watch wheels and pinions.	A-D-F-G	
S33010759	B124	Flat, 3,5 mm wide, with bevel-edge, 0,09 mm thick.	Measure diameters on conical pivots of wheels for watches.	B	
S33010758	B124	Flat, 3,5 mm wide, without bevel-edge, 0,12 mm thick.	Same as above	B	
S33010449	B125	Knife-shaped, 0,05 mm wide, 1,5 mm thick, tungsten carbide.	Measure diameters on gauges, gauge rods and staffs.	E	
S33010949	B131	Cylindrical, 2 mm in diameter, with a 90° vee groove, 0,3 mm in depth, tungsten carbide.	Measure diameters on cylindrical parts, e.g. staffs, arbors, rods, pins, balls, spheres or distance between shoulders.	A-C-D-F-G	
S33010958	B132	Flat, 3,5 mm wide, 0,7 mm thick with a 90° vee groove, 0,35 mm in depth, tungsten carbide.	Measure diameters and thickness on watch stones, washers, files or distance between shoulders.	A-C-D-F-G	
S33010073	B133	Flat, 3,5 mm wide, 0,6 mm thick with a 90° vee groove, 0,4 mm in depth, tungsten carbide.	Measure distance between shoulders plus diameters of staff, rods, bearing pins, pinions.	A-C-D-F-G	
S33010075	B134	Flat, 3,5 mm wide, 0,85 mm thick with two 90° vee grooves, 0,4 mm and ,8 mm in depth, tungsten carbide.	Measure distance between shoulders of staffs, bearing pins, rods, pinions for pivot diameters up to 1,5 mm.	A-C-D-F-G	
S33010845	B135	Flat, 5 mm wide, 0,6 mm thick, with one or two 90° vee grooves, 0,4 mm in depth, tungsten carbide. Hardened steel vee racks, 0,12 mm thick.	Measure distance between shoulders or centres of staffs, rods or pinions.	A-D-F-G	

Continued on page G-29

Paired inserts for external measuring

		Main characteristics	Applications (examples)	Convenient tables
S33010935	B151	With one or two 90° vee grooves, 0,6 mm in depth, tungsten carbide. Hardened steel vee racks, 0,12 mm thick, adjustable for varying diameters up to 1 mm.	Measure distance between shoulders or centres of staffs, rods or pinions with varying pivot diameters (height adjustment over one insert).	A-D-F-G
S33010934	B152	Jaws, 3,5 mm wide, 1 mm thick, in excess by 1,5 mm on top, full angle to 70°, tungsten carbide.	Width of the leaves of pinions, lowest module 0,05 mm	E
S33010937	BTS121-47			
S33010936	B151-9	Jaws, 1,5 mm thick, in excess sideways by 1,3 mm, full angle to 80°, tungsten carbide.	Width of wheel, lowest module 0,05 mm	

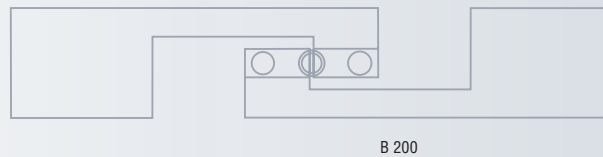
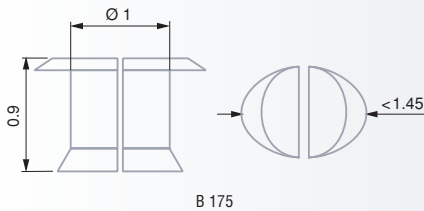
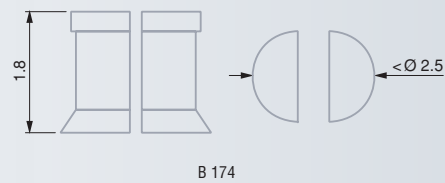
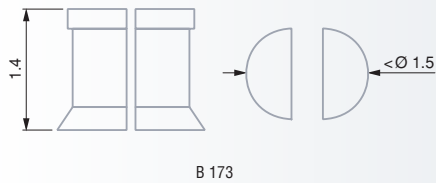
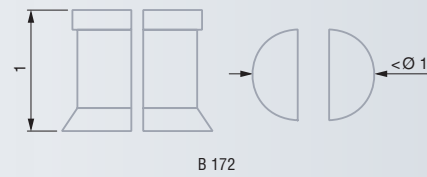
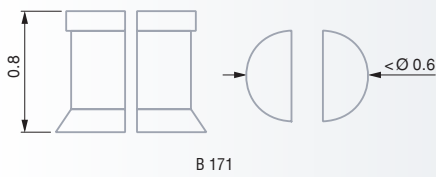


Paired inserts for internal measuring,
without holder



			Description
S33010933	B171		For internal dimensions from 0,6 to 4 mm
S33010938	B172		For internal dimensions from 1 to 5 mm
S33010939	B173		For internal dimensions from 1,5 to 6 mm
S33010940	B174		For internal dimensions from 2,5 to 7 mm
S33010941	B175		For inside grooves from 1,45 mm
S33010942*	B200		Holder for inserts made to measure internal dimensions from 0,6 to 7 mm

* Each pair requires the use of the holder.





Hardened steel inserts

Lapped measuring faces

2 µm (QUICK-CONTROL alone)

Adjustable from 0 up to 10 N.
Can be reversed from «neutral» to internal or external measuring

Suited plastic case

Identification number

Declaration of conformity

TESA QUICK-CONTROL C2 for Stationary Use

This versatile shop tool allows 2-point measurement of part series using one mobile insert coupled with the sensor plus another fixed one fitted with a clamp for mounting a dial gauge, precision indicator or axial probe having a 8 mm dia. clamping shaft.

- Quick, easy, dependable and precise measurement (repeatability to 2 µm without the use of the sensor).
- Robust construction, easy to mount and further use.
- Adjustable measuring force.
- Measure workpieces with plan-parallel, cone-shaped or cylindrical surfaces, grooves, through holes and blind bores, short centring shoulders and wall thickness. Also serve to check diameters on gear teeth.
- Detect form and position errors, i.e. roundness, concentricity and coaxiality.



TESA QUICK-CONTROL 160 C2

Main version within the C2 tool range. Measure mean to very small dimensions (see below for more details).



mm

in

mm

in

Internal dimensions

External dimensions

03330024	QUICK-CONTROL 160 C2	30 ÷ 120	1.19 ÷ 4.72	0 ÷ 90	0 ÷ 3.54
-----------------	-----------------------------	----------	-------------	--------	----------

Provided with the following accessories:

03360022	1 Steady insert holder, short.				
03360027	1 Pair of long inserts for internal/external diameters, through holes, blind bores, grooves and slots with max. depth to 3,7 mm, max. height to 25 mm.				
03360026	1 additional insert, as above but short. For use instead of the long one when measuring at low height.				

Option 1 – For small dimensions

03360065	1 Pair of long inserts with a 8 mm dia. clamping shaft, 6 mm dia. probing head.	22 ÷ 120	0.87 ÷ 4.72	0 ÷ 90	0 ÷ 3.54
-----------------	---	----------	-------------	--------	----------

Option 2 – For smaller dimensions

03360031	1 Pair of inserts for checking very small bores.	11.5 ÷ 60	0.46 ÷ 2.36	0 ÷ 90	0 ÷ 3.54
03360024	1 Pair of adapters for 5 mm dia. inserts. For use at probing points with a 8 mm dia.				
03360032	1 Pair of raising blocks used to scale down the width of the slot lying in the middle of the upper tool table.				

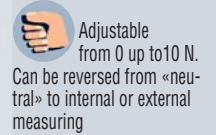
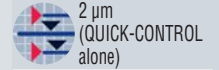
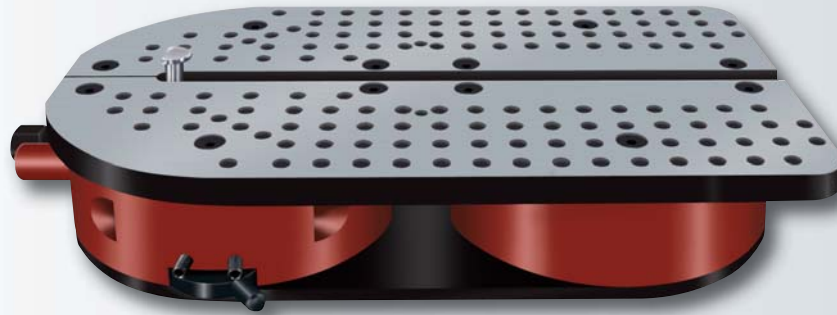
Option 3 – For large dimensions

03360023	1 Fixed insert holder, long.	30 ÷ 150	1.19 ÷ 5.9	0 ÷ 125	0 ÷ 4.93
-----------------	------------------------------	----------	------------	---------	----------



TESA QUICK-CONTROL 160 C2 JS

Identical to TESA QUICK-CONTROL 160 C2, but with extended application range.



No



mm

in

mm

in

Internal dimensions

External dimensions

No	Model	Internal dimensions (mm)	Internal dimensions (in)	External dimensions (mm)	External dimensions (in)
03330025	QUICK-CONTROL 160 C2 JS	30 ÷ 275	1.19 ÷ 10.8	0 ÷ 245	0 ÷ 9.64

Provided with the following standard accessories:

03360022	1 Insert holder, short
03360026	1 Standard insert, short
03360027	1 Pair of standard inserts, long

The options 1 and 2 for small and smaller dimensions described earlier can also be used on the model 160 C2 JS.



TESA QUICK-CONTROL 350 C2

Identical to Quick-Control 160 C2 JS for large dimensions, but specially made for inspecting heavy workpieces.

No



mm

in

mm

in

Internal dimensions

External dimensions

No	Model	Internal dimensions (mm)	Internal dimensions (in)	External dimensions (mm)	External dimensions (in)
03330001	QUICK-CONTROL 350 C2	47 ÷ 430	1.8 ÷ 16.93	0 ÷ 350	0 ÷ 13.77

Provided with the following standard accessories:

03360057	1 Pair of standard inserts, short for diameters from 62 mm
03360058	Same as above, but long
03360061	1 Fixed insert holder, short, L = 60 mm, with a 12 mm dia. clamping bore
03360062	1 Fixed insert holder, long, L = 200 mm, with a 12 mm dia. clamping bore



Hardened steel inserts

Lapped measuring faces

2 µm (QUICK-CONTROL alone)

Adjustable from from 0 up to 10 N.
Can be reversed from «neutral» to internal or external measuring

Suited plastic case

Identification number

Declaration of conformity

TESA QUICK-CONTROL C3 for Stationary Use

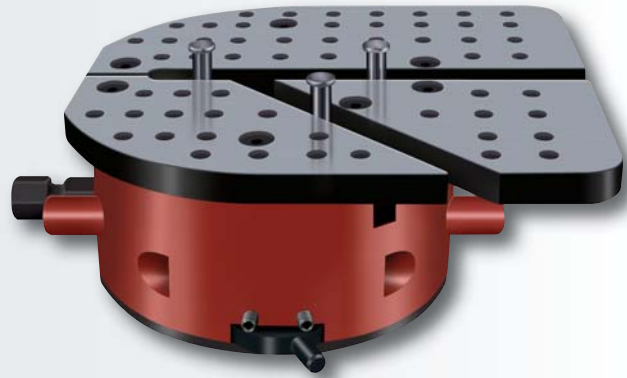
Having the same features and capabilities as TESA QUICK-CONTROL C2, this model also provides an extra transverse insert.

Both mobile and fixed inserts are used to perform 2-point measurements. The third one moves transversally, thus enabling a correct positioning of the workpiece, without the need for locating the culmination point. This insert also allows workpiece diameter and form errors to be measured at the same time.

TESA QUICK-CONTROL 160 C3 AL

Main version within the C3 tool range for mean to small dimensions.

With a mounted stop-like insert that can be moved in the 45° V-slot.



mm

in

mm

in

Internal dimensions

External dimensions

03330026 QUICK-CONTROL C3 AL

32 ÷ 120

1.26 ÷ 4.72

0 ÷ 90

0 ÷ 3.54

Provided with the following accessories:

03360067 1 Mobile standard insert, 10 mm dia. spherical probing head

03360068 Pair of standard inserts for fixed holder, 10 mm dia. spherical probing head, L = 36 mm

03360069 1 Fixed insert holder

03360070 1 Fixed stop holder

Option 1 – For small dimensions

03360066 3 long inserts with a 8 mm clamping shaft, 6 mm dia. probing head.

25 ÷ 120

0.99 ÷ 4.72

0 ÷ 90

0 ÷ 3.54

Option 2 – For smaller dimensions

03360072 1 Fixed insert holder for adapter

15 ÷ 60

0.6 ÷ 2.36

0 ÷ 50

0 ÷ 1.97

03360073 1 Fixed insert holder for the third point

03360074 3 Adapters

03360075 3 long inserts with a 5 mm clamping shaft for small bores

Option 3 – For large dimensions

03360023 1 Fixed insert holder, long

32 ÷ 150

1.26 ÷ 5.9

0 ÷ 125

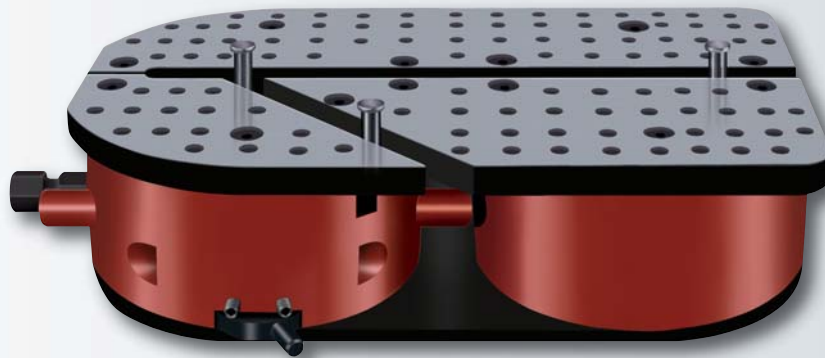
0 ÷ 4.93

03360076 1 Fixed insert holder for the third point, intermediate length = 72 mm



TESA QUICK-CONTROL 160 C3 JS

Identical to TESA QUICK-CONTROL 160 C3 AI, but with extended application range.



Hardened steel inserts



Lapped measuring faces



2 µm (QUICK-CONTROL alone)



Adjustable from 0 up to 10 N. Can be reversed from «neutral» to internal or external measuring



Suited plastic case



Identification number



Declaration of conformity



mm



in

Internal dimensions



mm



in

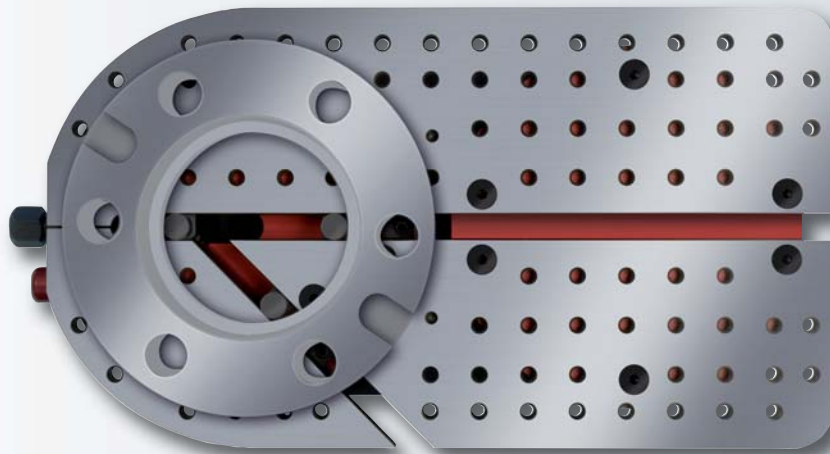
External dimensions

03330027 QUICK-CONTROL 160 C3 JS

Provided with the following standard accessories:

03360067	1 Mobile standard insert, long, 10 mm dia. spherical probing head	32 ÷ 190	1.26 ÷ 7.48	0 ÷ 170	0 ÷ 6.69
		(3 points)	(3 points)	(3 points)	(3 points)
03360068	Pair of standard inserts for fixed stop and support, 10 mm dia. spherical probing head, L = 36 mm	32 ÷ 275	1.26 ÷ 10.8	0 ÷ 245	0 ÷ 9.65
		(2 points)	(2 points)	(2 points)	(2 points)
03360069	1 Fixed insert holder				
03360070	1 Fixed stop holder				

The options 1 and 2 for small and smaller dimensions described earlier can also be used on the model 160 C3 JS.





Hardened steel inserts

Lapped measuring faces

2 μm
(QUICK-CONTROL alone)

Adjustable from 0 up to 10 N.
Can be reversed from «neutral» to internal or external measuring

Suited plastic case

Identification number

Declaration of conformity

TESA QUICK-CONTROL 160 C3 90 ST2

Special model for small dimensions. Features a mounted stop-like insert that can be moved in the 90° V-slot.



No	=	Internal dimensions		External dimensions	
		mm	in	mm	in
03330028	QUICK-CONTROL 160 C3 90 ST2	10 ÷ 80	0.4 ÷ 3.14	0 ÷ 55	0 ÷ 2.16

Provided with the following standard accessories:

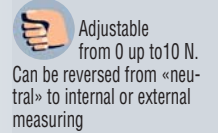
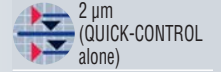
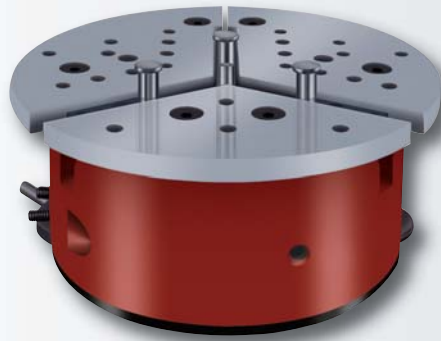
- 03360072** 1 Fixed insert holder for adapter
- 03360073** 1 Fixed insert holder for the third point and adapter
- 03360074** 3 Adapters
- 03360075** 3 Long inserts with as 5 mm dia. shaft
- 03360067** 1 Mobile standard insert, 10 mm dia. probing head
- 03360068** 1 Pair of standard inserts for fixed holder, 10 mm dia. spherical probing head, L = 36 mm



TESA QUICK-CONTROL 160 C3 120

Measures internal and external dimensions with 2-point contact. Features one mobile and two fixed inserts lying 120° apart. Specially designed for bore measurement.

Uses 2 setting rings matching both upper and lower limit values of the tolerated size for display setting and calibration. Recommended sensor: MC 2030-FC precision indicator with order No. S19070744.



mm

in

mm

in

Internal dimensions

External dimensions

03330029 QUICK-CONTROL 160 C3 120

≥ 25

≥ 0.99

≤ 80

≤ 3.15

Provided with the following standard accessories:

03360067 1 Mobile standard insert, Ø 10 mm dia. spherical probing head

03360068 1 Pair of standard inserts for fixed holder, 10 mm dia. spherical probing head, L = 36 mm

03360022 2 Fixed insert holders, short



Standard Accessories for TESA QUICK-CONTROL



03360022	1 Fixed insert holder, short.
03360023	1 Fixed insert holder, long.
03360024	1 Pair of adapters for 5 mm dia. inserts, 8 mm dia. clamping bore.
03360026	1 Standard insert, short, 8 mm dia. clamping shaft.
03360027	1 Pair of standard inserts, long, 8 mm dia. clamping shaft, for internal/external dimensions, through bores, blind bores, grooves with max. depth to 3,7 mm, max. height to 25 mm.
03360028	1 Pair of cone-shaped inserts, short, 8 mm dia. clamping shaft.
03360029	1 Pair of cone-shaped inserts, short, 8 mm dia. clamping shaft.
03360031	1 Pair of long inserts, 5 mm dia. clamping shaft, for smaller bores.
03360032	1 Pair of resting blocks used to scale down the width of the slot lying in the middle of the upper tool table. For use with 5 mm dia. inserts.
03360033	1 Extension, 20 mm long, for dial gauge plunger.
03360034	1 Blocking shoe for short or long insert holder.
03360037	1 Pair of short inserts, 8 mm dia. clamping shaft, for grooves with max. depth to 7,5 mm.
03360038	1 Pair of long inserts, 8 mm dia. clamping shaft, for grooves with max. depth to 7,5 mm.
03360039	1 Pair of short inserts, 8 mm dia. clamping shaft, for grooves with max. depth to 9,5 mm.
03360040	1 Pair of long inserts, 8 mm dia. clamping shaft, for grooves with max. depth to 9,5 mm.
03360042	1 Pair of long inserts, 8 mm dia. clamping shaft, for grooves with max. depth to 3,0 mm.
03360044	1 Pair of inserts for measuring centre-distances.
03360045	1 Insert for probe holder, M2,5 x 0,40 coupling thread.
03360050	1 Insert holder with stop included. To to be mounted on the upper plate, height adjustable from 10 to 20 mm.
03360051	1 Insert holder with stop included. To to be mounted on the upper plate, height adjustable from 18 to 70 mm.
03360053	1 Measuring stop with adjustable slot for use in any measuring position.
03360057	1 Pair of standard inserts, short, for QUICK CONTROL 350 C2.
03360058	1 Pair of standard inserts, long, for QUICK CONTROL 350 C2.
03360061	1 Short insert holder, L = 60 mm, with a 12 mm dia. mounting bore, for QUICK CONTROL 350 C2.
03360062	1 Long insert holder, L = 200 mm, with a 12 mm dia. mounting bore, for QUICK CONTROL 350 C2.
03360064	1 Angular blocking shoe, for fixed insert holder on QUICK CONTROL 350 C2.
03360065	1 Pair of long inserts, 8 mm dia. clamping shaft, 6 mm probing head, for small dimensions.
03360066	3 Pair of long inserts, 8 mm dia. clamping shaft, 6 mm probing head, for small dimensions.
03360067	1 Mobile standard insert, 10 mm dia. spherical probing head.
03360068	1 Pair of standard inserts for fixed holders, 10 mm dia. spherical probing head, L = 36 mm.
03360069	1 Fixed insert holder for QUICK CONTROL C3.
03360070	1 Holder for mounted stop-like insert on QUICK CONTROL C3.
03360071	1 Pair of long inserts, 8 mm dia. clamping shaft, 3 mm probing head, for small dimensions.
03360072	1 Fixed insert holder for adapters.
03360073	1 Fixed holder for stop-like insert and adapter.
03360074	3 Adapters.
03360075	3 Long inserts, 5 mm clamping shaft.
03360076	1 Fixed holder for stop-like insert, intermediate length = 72 mm.
03360077	1 Pair of long inserts, 8 mm dia. clamping shaft, 4,8 mm probing head, for small dimensions.
03360078	1 Fixed holder for stop-like insert, intermediate length = 56 mm.

