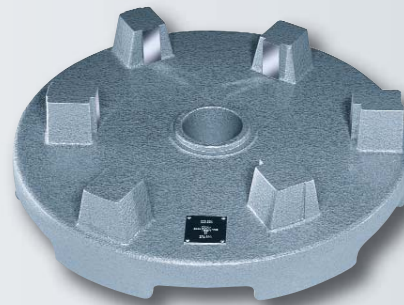
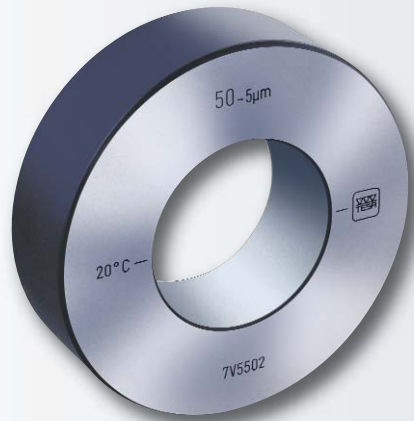


TESA Setting Rings and Setting Masters



Shipping packaging

Identification number



<i>Setting rings</i>					
00843200	4			1,5	1,5
00843201	5,5	00850100	0.200	1,5	1,5
00840114	6	00850114	0.250	1,5	1,5
00840101	8	00850115	0.300	1,5	1,5
00840115	8,5	00850101	0.350	1,5	1,5
00840102	10	00850102	0.425	1,5	1,5
00840103	11			1,5	1,5
00840116	12,5	00850103	0.500	1,5	1,5
00840104	15	00850104	0.600	1,5	1,5
00840105	17	00850105	0.700	1,5	1,5
00840117	17,5			1,5	1,5
00840106	25	00850106	1.000	1,5	1,5
00840107	35	00850107	1.400	2	2
00843230	45	00850116	1.800	2	2
00840108	50	00850108	2.000	2	2
00843239	60	00850118	2.400	2	2
00840109	70	00850109	2.800	2	2
00840118	85	00850117	3.400	2	2
00840110	90	00850110	3.600	2	2
00840111	110	00850111	4.400	2,5	2,5
00840112	125	00850112	5.000	2,5	2,5
00840113	175	00850113	7.000	2,5	4

Setting master

00843101	225, 275	00853101	9, 11	—	6
-----------------	----------	-----------------	-------	---	---

* Making no allowance for a rim of 1 mm.

** All listed values are determined through a 2-point measurement taken at mid-height of the setting ring. The measuring direction is marked with 2 strokes. The measured actual dimension is engraved on every setting master.