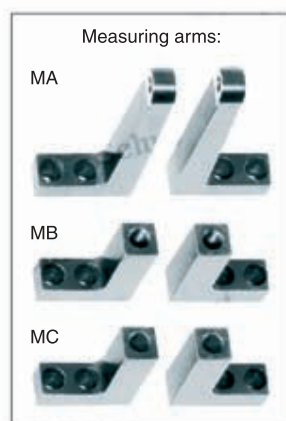


Universal measuring instrument

Universal measuring instrument consisting of a steel tube with one fixed and one mobile measuring arm holder. The measurement direction is reversible by a simple turn of the adjusting screw at the end of the instrument. This feature enables measurements of internal and external dimensions. Excl. dial indicator or measuring probe (measuring range 0-10 mm, shaft 8H7 mm).

Base instrument, with wooden case

Item No.	Type	Measuring range (internal/external) in mm, with:				Price EUR
		Spherical disc inserts	Spherical needle insert $\varnothing 2 \times 5$ mm	Ball insert $\varnothing 3$ mm	Measuring disc $\varnothing 15 \times 4$ mm	
856.340	2-MR	29-254/9-234	38-263/0-225	36-261/2-227	46-256/16-226	
856.341	2L-MR	29-354/9-334	38-363/0-325	36-361/2-327	46-356/16-326	
856.342	2EL-MR	29-454/9-434	38-463/0-425	36-461/2-427	46-456/16-426	



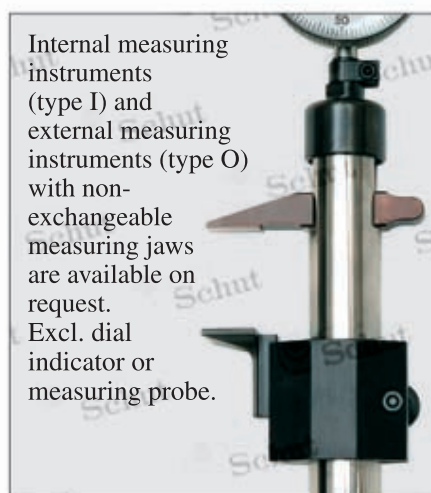
Measuring arms

Item No.	Length mm	Price EUR per piece
Type MA, with $\varnothing 3.5$ mm bore for interchangeable inserts:		
856.343	25	
856.344	50	
856.345	75	
856.346	100	
Type MB, with thread M6 for interchangeable measuring disc:		
856.347	30	
856.348	50	
Type MC, with bore 4H7 for various interchangeable inserts:		
856.349	30	
856.350	50	

Example of a complete instrument with measuring arms type MB, measuring discs and a dial indicator.



Base instrument
type MR

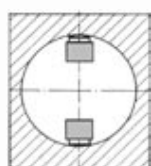


Internal measuring instruments (type I) and external measuring instruments (type O) with non-exchangeable measuring jaws are available on request. Excl. dial indicator or measuring probe.

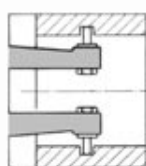
Universal measuring instrument (continued)

Interchangeable inserts for type MA

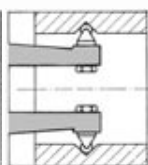
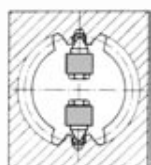
Item No.	Description	Price EUR per piece
856.351	Spherical disc insert	
856.372	Flat disc insert	
856.352	Spherical needle ø 2 x 5 mm	
856.376	Ditto, ø 2 x 25 mm	
856.353	Ball insert ø 3 mm	



856.351:
measuring
of bores



856.352:
measuring
of narrow
grooves



856.353: measuring
of internal gear teeth,
V-grooves, etc.

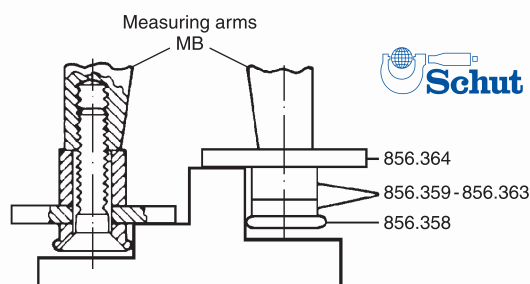


Available on request: inserts for thread
pitch diameters (metric: pitch 0.5-7.0;
BSW: 14-3.0 t.p.i.; UN: 32-3.0 t.p.i.). The
measuring anvils rotate to follow the helix
of the thread.



Interchangeable measuring disc for type MB

A measuring disc, which can be fitted
by means of spacers and a support washer,
is available for measuring arms MB with
thread M6. For measuring of shoulders at
different levels, locating flanges, etc.



Item No.	Description	Price EUR per piece
856.358	Measuring disc ø 15 x 4 mm	
856.359	Spacer 1 mm	
856.360	Spacer 2 mm	
856.361	Spacer 3 mm	
856.362	Spacer 6 mm	
856.363	Spacer 10 mm	
856.364	Support washer ø 30 x 3 mm	



Extensions and connecting elements

Item No.	Description	Price EUR
856.354	Extension 300 mm	
856.355	Extension 500 mm	
856.356	Connecting element for measuring element and extension	
856.357	End cover for extension	

Before placing the extension the measurement direction
has to be determined with the adjusting screw.