



0481 Cabinet for measuring and inspection plates

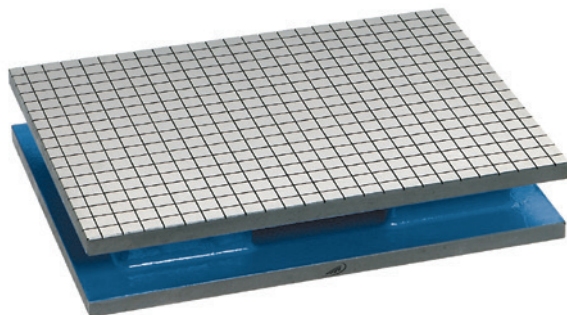


Model

- Frame is made of angled steel and is completely panelled with steel
- Adjustable 3 point bearing fitting
- 2 adjustable screws for stability
- Lockable doors
- Shelves are removable
- Feet are adjustable to compensate for unevenness of the floor
- 1 door, 1 shelf

☒	☒	For plate size mm	Description	Order no.	List price EUR
	▪	600 x 500	1 door, 1 shelf	0481 184	1144.00
	▪	800 x 600	1 door, 1 shelf	0481 186	1260.00
	▪	1000 x 600	2 doors, 1 drawer, 1 shelf	0481 188	1308.00
	▪	1200 x 800	2 doors, 1 drawer, 1 shelf	0481 190	1462.00

0482 Lapping and inspection plate



Model

- High grade cast iron
- Finely ground
- One side for lapping with rectangular grooves
- One side as inspection plate flat straight trough

Delivery

- Wooden case

☒	☒	Base dimensions mm	Order no.	List price EUR
	▪	360 x 260 x 65	0482 101	488.00

0544 Angle normal 90°, triangular



Model

- Made of black granite
- From 600 x 400 mm with weight reducing holes

☒	☒	Length mm	Width mm	Height mm	Angle accuracy μ	Order no.	List price EUR
		150	40	200	2	0544 101	346.00
		200	50	300	2	0544 102	534.00
		250	60	400	3	0544 103	739.00
		300	60	500	3	0544 104	934.00
	▪	400	70	600	4	0544 105	1588.00
	▪	500	90	800	4	0544 106	2392.00
	▪	600	100	1000	4	0544 107	4565.00