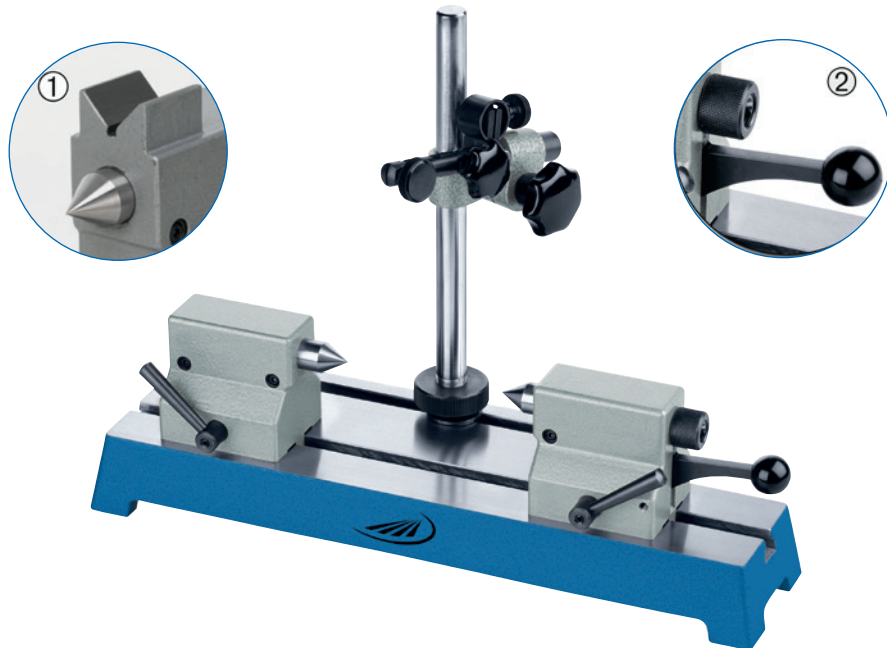




0780 Bench centres



Model

- Finely ground surface, flatness tolerance according to DIN 876-2
- With two adjustable tailstocks
- Left tailstock with fixed centre
- Right tailstock with retractable spring mounted centre, free lift appr. 10 mm

Delivery

- Tailstocks can be clamped via an eccentric clamp
- Tailstock height 75 mm with integrated V-groove support
- Quick-clamping device by clamping lever
- With T-groove and support column
- With mounting hole for dial gauges \varnothing 8 mm

- Cardboard box

| ▶ | ☒ | Height of centers | Workpiece load | Distance between centres | Center dia. | T-groove width | Base | Order no. | List price |
|---|---|-------------------|----------------------|--------------------------|-------------|----------------|-----------|-----------|------------|
| | | mm | p. tailstock max. kg | mm | mm | mm | mm | | EUR |
| | | 50 | 5 | 200 | 16 | 10H7 | 350 x 110 | 0780 101 | 605.00 |
| | | 50 | 5 | 350 | 16 | 10H7 | 500 x 110 | 0780 102 | 768.00 |
| | | 75 | 5 | 200 | 16 | 10H7 | 350 x 110 | 0780 104* | 692.00 |
| | | 75 | 5 | 350 | 16 | 10H7 | 500 x 110 | 0780 105* | 788.00 |
| | ▪ | 100 | 20 | 450 | 22 | 12H7 | 700 x 180 | 0780 107 | 1984.00 |
| | ▪ | 150 | 20 | 450 | 22 | 12H7 | 700 x 180 | 0780 108 | 2212.00 |

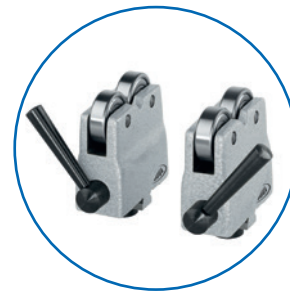
* With integrated V-groove support on the tailstocks for \varnothing 6 - 24 mm

Accessories

| | Order no. | List price EUR |
|---|-----------|-------------------|
| Replacement centre, retractable, \varnothing 16 mm (50 - 75 mm) | 0780 174 | 49.00 |
| Replacement centre, fixed, \varnothing 16 mm (50 - 75 mm) | 0780 175 | 39.00 |
| Replacement centre, retractable, \varnothing 22 mm (100 - 150 mm) | 0780 177 | 125.00 |
| Replacement centre, fixed, \varnothing 22 mm (100 - 150 mm) | 0780 178 | 115.00 |



0780 Bench centres with roller supports



Specification

- Finely ground surface, flatness tolerance according to DIN 876-2
- With two roller supports
- Concentricity tolerance of the rolls 0.005 mm
- Quick-clamping device by clamping lever
- With T-groove and support column
- With mounting hole for dial gauges \varnothing 8 mm
- Fine adjustment

Delivery

- Cardboard box

| Marked • | Marked • | Height of roller supports | T-groove width | Base | Contact surface | Order no. | List price |
|----------|----------|---------------------------|----------------|-----------|-----------------|-----------|------------|
| | | mm | mm | mm | mm | | EUR |
| | | 65 | 10H7 | 350 x 110 | 3 - 30 | 0780 201 | 559.00 |
| | | 65 | 10H7 | 500 x 110 | 3 - 30 | 0780 202 | 699.00 |
| | | 100 | 12H7 | 700 x 180 | 4 - 60 | 0780 206 | 1400.00 |



0780 Bench centres with V-groove supports



Specification

- Finely ground surface, flatness tolerance according to DIN 876-2
- With two V-supports
- Quick-clamping device by clamping lever
- Prismatic contact surface 90°
- V-groove surfaces made of hardened steel (replaceable)
- With T-groove and support column
- With mounting hole for dial gauges Ø 8 mm
- Fine adjustment

Delivery

- Cardboard box

| Icon | Height of V-supports mm | T-groove width mm | Base mm | Contact surface mm | Order no. | List price EUR |
|------|----------------------------|----------------------|------------|-----------------------|-----------|-------------------|
| ☒ | 65 | 10H7 | 350 x 110 | 5 - 25 | 0780 301 | 529.00 |
| ☒ | 65 | 10H7 | 500 x 110 | 5 - 25 | 0780 302 | 669.00 |
| ☒ | 100 | 10H7 | 700 x 180 | 5 - 50 | 0780 306 | 1340.00 |



0780 Bench centres for heavy workpieces



Model

- Finely ground surface, flatness tolerance according to DIN 876-2
- With two adjustable tailstocks
- Left tailstock with fixed centre
- Right heavy tailstock with moveable, spring mounted centre, free lift appr. 10 mm
- Tighten by hand crank
- Tailstock can be clamped via an eccentric clamp
- Base made of cast iron with T-groove
- Measuring stand with mounting hole for dial gauges Ø 8 mm

Delivery

- Cardboard box

| ✕ | ☒ | Height of centers | Workpiece load | Distance between centres | Centering tip dia. | T-groove width | Base | Order no. | List price |
|---|---|-------------------|----------------------|--------------------------|--------------------|----------------|-----------|-----------|------------|
| | | mm | p. tailstock max. kg | mm | mm | mm | mm | | EUR |
| | ▪ | 100 | 40 | 450 | 22 | 12 | 700 x 180 | 0780 141 | 2116.00 |
| | ▪ | 150 | 40 | 450 | 22 | 12 | 700 x 180 | 0780 142 | 2395.00 |

0780 Pair of v-support inserts



Model

- V-support inserts to place in and for testing of shafts without centrebores
- V-support inserts are exchanged for the pointed alignment centre of the tailstocks



| ✕ | ☒ | For height of centers | Max. workpiece dia. | Contact surface | Order no. | List price |
|---|---|-----------------------|---------------------|-----------------|-----------|------------|
| | | mm | mm | mm | | EUR |
| | | 50/75 | 15 | 3 - 15 | 0780 021 | 88.00 |
| | | 100 | 45 | 8 - 45 | 0780 023 | 133.00 |

0780 Replacement support column



Model

- Column is moving and can be clamped in the T-groove
- Mounting for indicator:
 - shaft mounting Ø 8 mm for dial test indicators
- Integrated fine adjustment



| ✕ | ☒ | For height of centers | Projection | T-groove width | Column height | Column dia. | Arm dia. | Order no. | List price |
|---|---|-----------------------|------------|----------------|---------------|-------------|----------|-----------|------------|
| | | mm | mm | | mm | mm | mm | | EUR |
| | | 50/75 | 105 | 10 | 200 | 18 | 14 | 0780 072 | 105.00 |
| | | 100 | 105 | 12 | 240 | 18 | 14 | 0780 073 | 184.00 |
| | | 150 | 105 | 12 | 440 | 18 | 14 | 0780 074 | 212.00 |



0780 Left tailstocks with a rotating collet chuck



Model

- The left tailstock can be changed because of this specification with a collet chuck
- The collet chuck is rotatable for runout testing
- T-grooves bearing
- Eccentric clamp

| Height of centers mm | T-groove width mm | Order no. | List price EUR |
|---|----------------------|-----------|-------------------|
| For collet chucks type F10 (Ø 1 - 7 mm) | | | |
| 50 | 10 | 0780 001 | 376.00 |
| 75 | 10 | 0780 002 | 417.00 |
| For collet chucks type F14 (Ø 1 - 10 mm) | | | |
| 100 | 12 | 0780 003 | 649.00 |

- Collet chucks F10 from 1-7 mm are available upon request
- Collet chucks F14 from 1-10 mm are available upon request

Pair of replacement tailstocks for 0780

Model

- Included in base model 0780
- 75 mm with intergrated V-groove support
- For heavy workpieces with load up to 40 kg on request

| Height of centers mm | Workpiece load p. tailstock max. kg | T-groove width mm | Order no. | List price EUR |
|-------------------------|--|----------------------|-----------|-------------------|
| 50 | 5 | 10 | 0780 091 | 380.00 |
| 75 | 5 | 10 | 0780 092 | 427.00 |
| 100 | 20 | 12 | 0780 093 | 879.00 |
| 150 | 20 | 12 | 0780 094 | 909.00 |

Pair of V-groove supports for 0780



Model

- For workpieces without centering
- Functional test through applying on e.g. plain lateral surface
- Recognition of form errors
- For exchange of centre supports
- Prismatic contact surface 90°
- V-groove surfaces made of hardened steel (replaceable)
- T-grooves bearing
- Eccentric clamp

| Height of centers* mm | Height of V-supports mm | T-groove width mm | Contact surface mm | Order no. | List price EUR |
|--------------------------|----------------------------|----------------------|-----------------------|-----------|-------------------|
| 65 | 65 | 10 | 5 - 25 | 0780 032 | 162.00 |
| 100 | 100 | 12 | 5 - 50 | 0780 033 | 231.00 |

* based on the center of an axis of a shaft Ø 10 mm

Pair of roller supports for 0780



Model

- For exchange of centre supports
- Ball bearing rollers for easy turning of the workpieces
- Concentricity tolerance 0.005 mm

| Height of roller supports* mm | T-groove width mm | Contact surface mm | Order no. | List price EUR |
|----------------------------------|----------------------|-----------------------|-----------|-------------------|
| 65 | 10 | 3 - 30 | 0780 042 | 193.00 |
| 100 | 12 | 4 - 60 | 0780 043 | 261.00 |

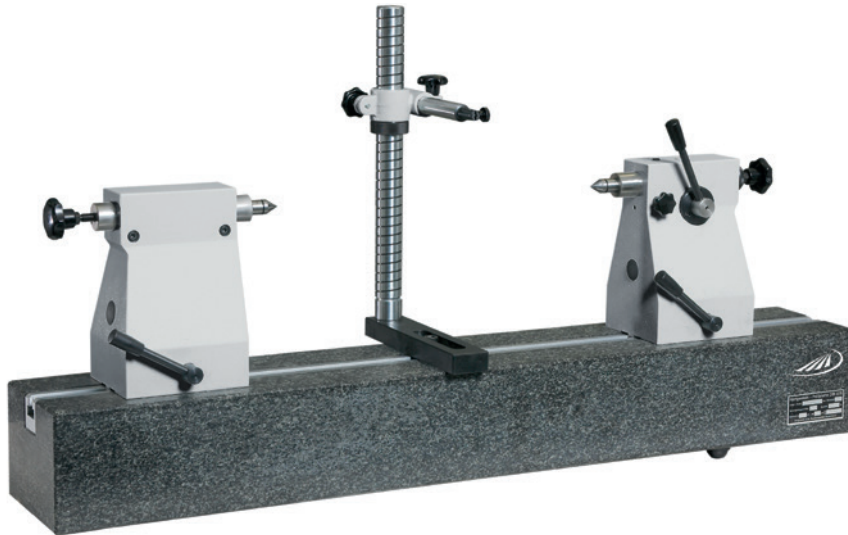
* based on the center of an axis of a shaft Ø 10 mm



0783 Bench centre



DIN
876-1



Model

- Dark granite work bench
- Flatness tolerance in accordance to DIN 876-1
- Right tailstock with retractable spring mounted centre (quick adjustment lever)
- Left tailstock with fixed centre
- Tailstocks can be adjusted via an eccentric clamp

Delivery

- Wooden handling case
- Included:
 - Work bench
 - Support post
 - 1 pair of tailstocks with pointed alignment centre 60° MK 2

| ☒ | ☒ | Height of centers | Workpiece load | Distance between centres | T-groove width | Base | Order no. | List price |
|---|---|-------------------|----------------------|--------------------------|----------------|------------|-----------|------------|
| | | mm | p. tailstock max. kg | mm | mm | mm | | EUR |
| ▪ | | 200 | 24 | 650 | 14 | 1100 x 180 | 0783 012 | 3545.00 |

Accessories

| | Order no. | List price |
|-----------------------------------|-----------|------------|
| | | EUR |
| Pair of pointed alignment centres | 0782 181 | 225.00 |
| Tailstock | 0782 191 | 1172.00 |
| Measuring support | 0783 070 | 296.00 |

0782 Pair of roller supports



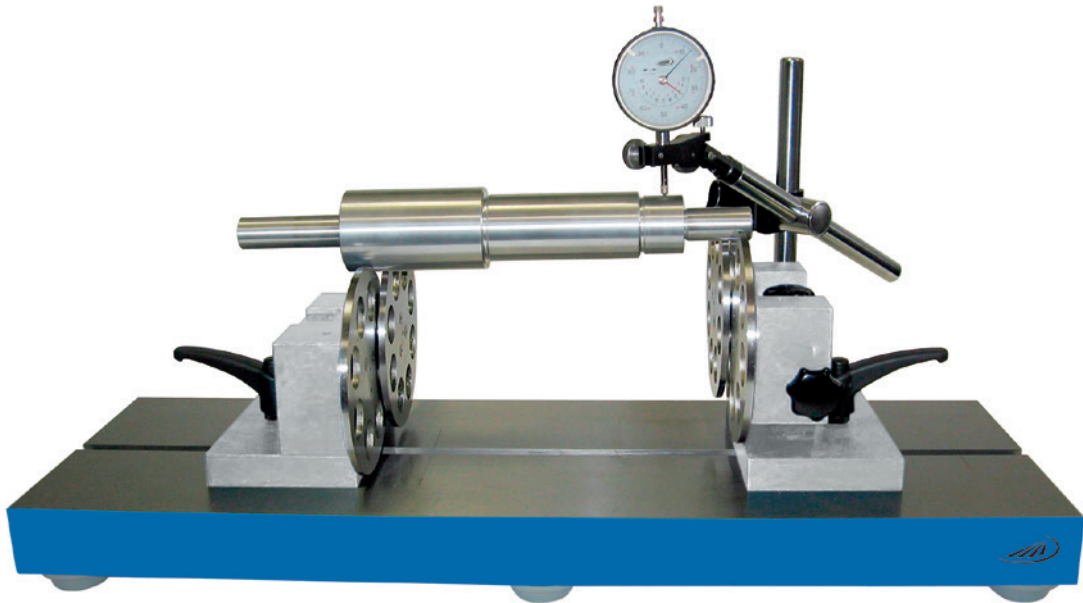
Model

- For exchange of centre supports
- Ball bearing rollers for easy turning of the workpieces
- T-grooves bearing
- Eccentric clamp

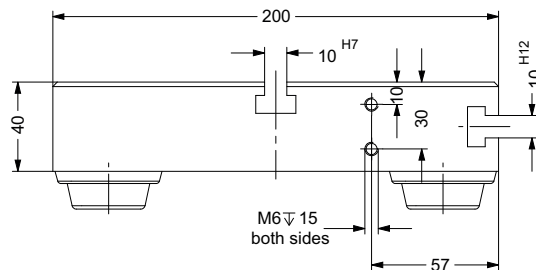
| ☒ | ☒ | Height of roller supports | T-groove width | Contact surface | Order no. | List price |
|---|---|---------------------------|----------------|-----------------|-----------|------------|
| | | mm | mm | mm | | EUR |
| | | 200 | 14 | 25 - 100 | 0782 160 | 706.00 |



0784 Concentricity measuring gauge with disc supports



3



Model

- Centerless concentricity measuring instrument
- High accuracy discs are being mounted on bearings; free of play
- Discs can be slid to either side on the base

Delivery

- One sliding disc can be adjusted up to 30 mm for diametral compensation
- Concentricity accuracy < 5 μm
- Wooden case
- Includes the support stand, excludes a dial gauge

| Workpiece load p. tailstock max. kg | Distance between the end mm | Disc diameter mm | Max. workpiece dia. mm | Order no. | List price EUR |
|--|--------------------------------|---------------------|---------------------------|-----------|-------------------|
| 25 | 400 | 120 | 250 | 0784 108 | 3101.00 |

Accessories

| Accessories | Order no. | List price EUR |
|---|-----------|-------------------|
| Replacement discs, pair, Ø 120 mm | 0784 181 | 625.00 |
| Complete support stand for order no. 0784 108 | 0784 190 | 175.00 |



0788 Shaft measuring instrument

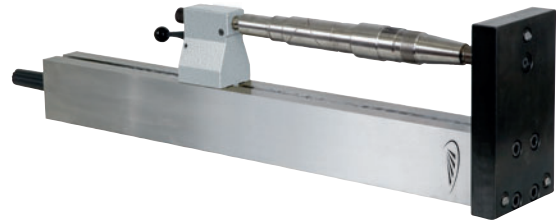


Model

- For rapid measurement of diameters, distances, shoulders, taper, roundness, etc.
- For vertical and horizontal alignment
- Vertical base with 3 hardened adjustment support surfaces
- Measuring beam is made of stainless steel
- Load capacity horizontal max. 20 kg

Delivery

- Cardboard box
- Without measuring support, guideway, dial gauge (optional accessories)



application as a bench centre

| Height of centers | Distance between centres | T-groove width | Base | Order no. | List price |
|----------------------------|--------------------------|----------------|-----------|-----------|------------|
| mm | mm | mm | mm | | EUR |
| 75 | 550 | 10 H7 | 200 x 120 | 0788 104 | 1131.00 |
| Accessories | | | | Order no. | List price |
| Support arm with guideways | | | | 0788 180 | 229.00 |



0788 180



0788 Shaft measuring instrument lightweight



Model

- For rapid measurement of distances, shoulders, taper, roundness, etc.
- Vertical and horizontal alignment
- Vertical base with 3 hardened adjustment support surfaces
- Measuring beam is made of hard anodized aluminium profile
- Aluminium tailstocks
- Load capacity horizontal max. 15 kg

Delivery

- Cardboard box
- Without measuring support, guideway, dial gauge (optional accessories)



application as a bench centre

3

| Icon | Height of centers | Distance between the end | T-groove width | Base | Order no. | List price | |
|----------------------------|-------------------|--------------------------|----------------|-----------|-----------|------------------|-------------------|
| | mm | mm | mm | mm | | EUR | |
| | 75 | 550 | 10 H7 | 200 x 150 | 0788 904 | 900.00 | |
| Accessories | | | | | | Order no. | List price |
| | | | | | | EUR | |
| Support arm with holder | | | | | 0788 980 | 73.00 | |
| Support arm with guideways | | | | | 0788 990 | 326.00 | |



0788 980



0788 990