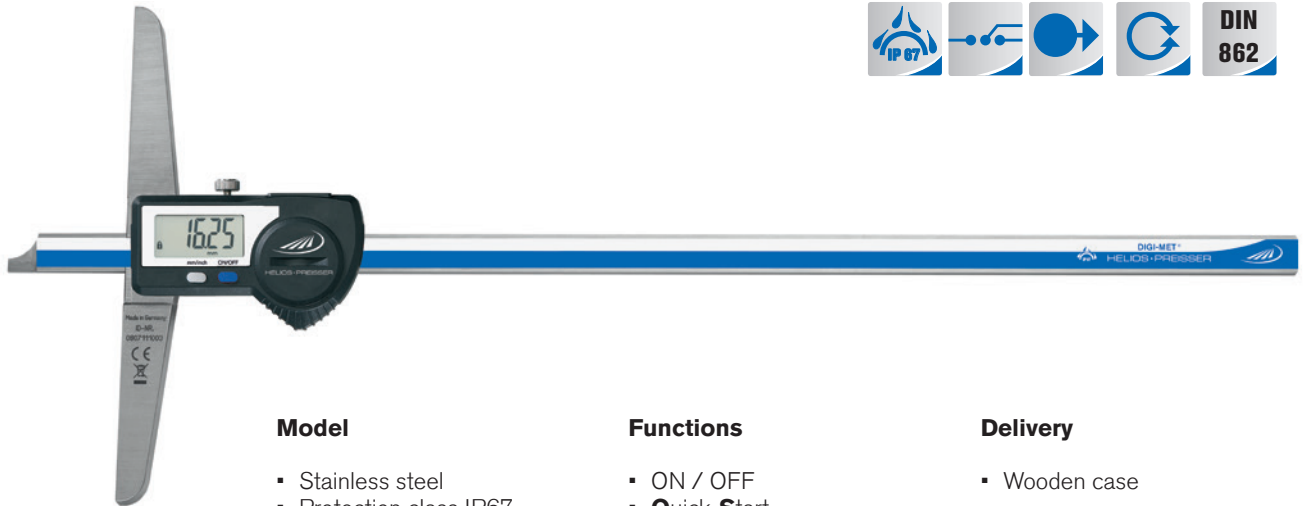




1360 DIGI-MET® Depth gauges



Model

- Stainless steel
- Protection class IP67
- From 1000 mm protection class IP65
- LCD display 7.5 mm
- DIN 862
- Locking screw
- Straight measuring rod

Functions

- ON / OFF
- **Quick-Start**
- **Quick-Lock** (key lock)
- Set to zero at any point
- mm / inch switchin
- Variable data output RS 232 + Digimatic + USB

Delivery

- Wooden case

Icon	Measuring range		Length of beam	Reading		Error limit	Order no.	List price
	mm	inch	mm	mm	inch	mm		EUR
▪	0 - 150	0 - 6	100	0.01	.0005	0.03	1360 716	329.00
▪	0 - 200	0 - 8	100	0.01	.0005	0.03	1360 718	373.00
▪	0 - 300	0 - 12	150	0.01	.0005	0.03	1360 722	419.00
▪	0 - 500	0 - 20	150	0.01	.0005	0.03	1360 728	481.00
▪	0 - 1000	0 - 39	250	0.01	.0005	0.04	1360 734	1370.00
▪	0 - 1500	0 - 59	250	0.01	.0005	0.05	1360 738	2090.00
▪	0 - 2000	0 - 80	250	0.01	.0005	0.06	1360 740	2481.00



1998720

1997501

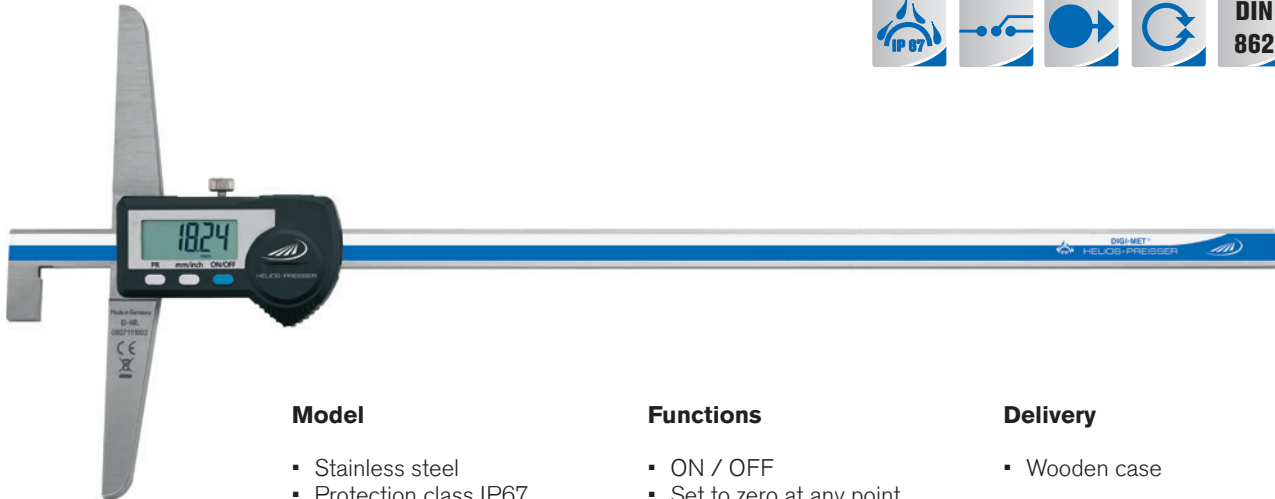
1998501

Accessories

	Order no.	List price
		EUR
Battery, 3V-Lithium, CR 2032	0220 704	3.90
Data cable DATA VARIABLE to RS232	1997 501	50.00
Data cable DATA VARIABLE to digimatic	1998 501	64.00
Data cable DATA VARIABLE to USB	1998 720	72.00



1362 DIGI-MET® Depth gauges



Model

- Stainless steel
- Protection class IP67
- LCD display 7,5 mm
- DIN 862
- Locking screw
- L-shaped measuring rod
- Larger measuring ranges are available upon request

Functions

- ON / OFF
- Set to zero at any point
- mm / inch switching
- **Quick-Start**
- **Quick-Lock** (key lock)
- PRESET-Function (setting a numerical value)
- Variable data output RS 232 + Digimatic + USB

Delivery

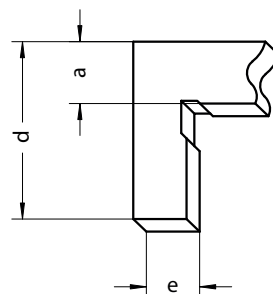
- Wooden case

Marked	Measuring range		Length of beam mm	Reading		Error limit mm	Order no.	List price EUR
	mm	inch		mm	inch			
▪	0 - 300	0 - 12	150	0.01	.0005	0.03	1362 722	429.00
▪	0 - 500	0 - 20	150	0.01	.0005	0.03	1362 728	499.00



Accessories

	Order no.	List price EUR
Battery, 3V-Lithium, CR 2032	0220 704	3.90
Data cable DATA VARIABLE to RS232	1997 501	50.00
Data cable DATA VARIABLE to digimatic	1998 501	64.00
Data cable DATA VARIABLE to USB	1998 720	72.00



Measuring range mm	a	e	d
300	11.6	10	28
500	11.6	10	28



1364 DIGI-MET® Depth gauges



1

Model

- Stainless steel
- Protection class IP67
- LCD display 7.5 mm
- DIN 862
- Locking screw
- Replaceable pin
- Larger measuring ranges are available upon request

Functions

- ON / OFF
- **Quick-Start**
- **Quick-Lock** (key lock)
- Set to zero at any point
- mm / inch switching
- Variable data output RS 232 + Digimatic + USB

Delivery

- Wooden case

▶▶	Measuring range		Length of beam	Reading		Error limit	Order no.	List price
	mm	inch	mm	mm	inch	mm		EUR
▪	0 - 200	0 - 8	100	0.01	.0005	0.03	1364 722	406.00
▪	0 - 300	0 - 12	150	0.01	.0005	0.03	1364 728	452.00

Accessories



1998720

1997501

1998501

	Order no.	List price
		EUR
Battery, 3V-Lithium, CR 2032	0220 704	3.90
Data cable DATA VARIABLE to RS232	1997 501	50.00
Data cable DATA VARIABLE to digimatic	1998 501	64.00
Data cable DATA VARIABLE to USB	1998 720	72.00

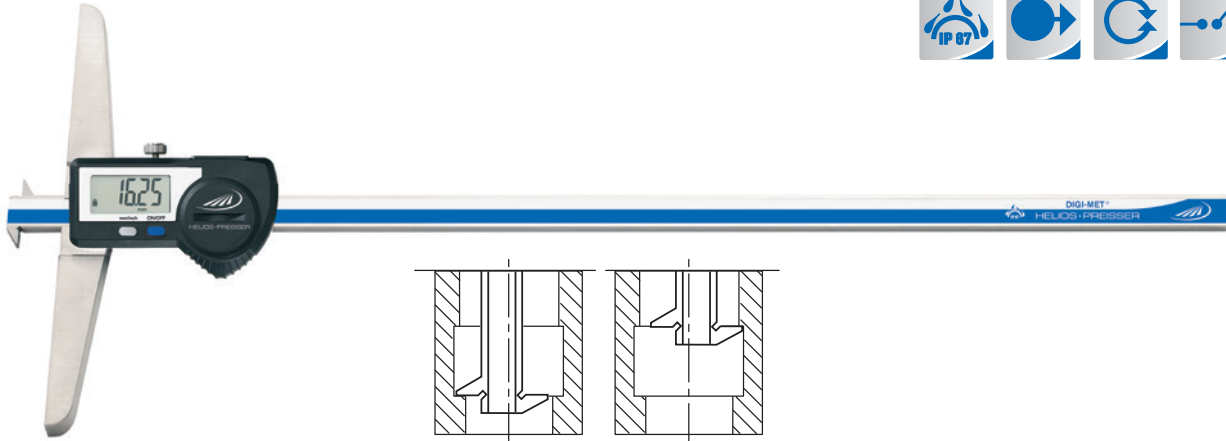
0276 Replacement measuring pin



▶▶	Diameter	Order no.	List price
	mm		EUR
	2	0276 711	6.40



1366 DIGI-MET® Offset depth gauges



Model

- Stainless steel
- Inductive measuring system, protection class IP67
- LCD display 7,5 mm
- Factory standard
- Housing and operating keys have an excellent chemical resistance
- Locking screw

Functions

- ON / OFF
- **Quick-Start**
- **Quick-Lock** (key lock)
- Set to zero at any point
- mm / inch switching
- Variable data output RS 232 + Digimatic + USB

Delivery

- Wooden case

Marked	Measuring range		Length of beam	Reading		Error limit	Order no.	List price
	mm	inch		mm	mm			
▪	0 - 200	0 - 8	100	0.01	.0005	0.03	1366 718	422.00
▪	0 - 300	0 - 12	150	0.01	.0005	0.03	1366 722	510.00
▪	0 - 500	0 - 20	150	0.01	.0005	0.03	1366 728	642.00



1998720

1997501

1998501

Accessories

- Battery, 3V-Lithium, CR 2032**
- Data cable DATA VARIABLE to RS232**
- Data cable DATA VARIABLE to digimatic**
- Data cable DATA VARIABLE to USB**

Order no.

List price

EUR

0220 704

1997 501

1998 501

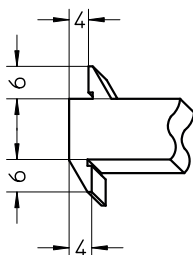
1998 720

3.90

50.00

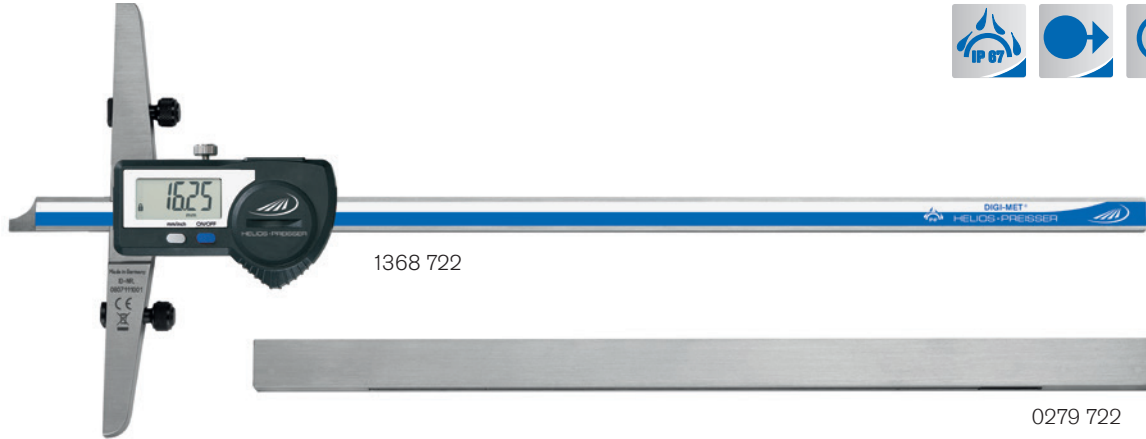
64.00

72.00





1368 DIGI-MET® Depth gauges



1

Model

- Stainless steel
- Inductive measuring system, protection class IP67
- LCD display 7.5 mm
- Locking screw

Functions

- ON / OFF
- **Quick-Start**
- **Quick-Lock** (key lock)
- Set to zero at any point
- mm / inch switching
- Variable data output RS 232 + Digimatic + USB

Delivery

- Wooden box
- **The sliding measuring base must be ordered separately**

Measuring range	Length of beam	Reading		Error limit	Order no.	List price
		mm	inch			
0 - 300	150	0.01	.0005	0.03	1368 722	429.00
0 - 500	150	0.01	.0005	0.03	1368 728	489.00



1998720 1997501 1998501

Accessories

Accessories	Order no.	List price
Battery, 3V-Lithium, CR 2032	0220 704	3.90
Data cable DATA VARIABLE to RS232	1997 501	50.00
Data cable DATA VARIABLE to digimatic	1998 501	64.00
Data cable DATA VARIABLE to USB	1998 720	72.00

0279 Sliding measuring base made of stainless steel



Delivery

- Bolts included

Dimensions	Order no.	List price
mm		EUR
300 x 16	0279 722	272.00
400 x 16	0279 723	284.00
500 x 16	0279 724	296.00

Accessories

Accessories	Order no.	List price
Fixture for sliding measuring base, two parts	0279 792	21.50



1371i DIGI-MET® Depth gauges IP67 with integrated wireless



DIN
862



1371 41660

integrated IW wireless

Wireless Data Transmission

Model

- Stainless steel
- Inductive measuring system, protection class IP67
- DIN 862
- Locking screw
- LCD display 11 mm
- Measuring pin dia. 1.5 mm

Functions

- ON / OFF
- **Quick-Start**
- **Quick-Lock** (key lock)
- PRESET-Function (setting a numerical value)
- Set to zero at any point
- mm / inch switching
- Integrated Wireless

Delivery

- Plastic case



More information on our i-series and Integrated Wireless on page 277

Marked *	Measuring range	Length of beam		Reading		Error limit	Order no.	List price
		mm	inch	mm	inch			
▪	0 - 150	0 - 6	100	0.01	.0005	0.03	1371 41660	432.00
▪	0 - 200	0 - 8	100	0.01	.0005	0.03	1371 41860	459.00
▪	0 - 300	0 - 12	150	0.01	.0005	0.04	1371 42260	516.00
▪	0 - 500	0 - 20	150	0.01	.0005	0.05	1371 42860	585.00



1998780

Accessories

Battery, 3V-Lithium, CR 2032

i-Stick USB-receiver for Integrated Wireless

Order no.

0220 704

1998 780

List price
EUR

3.90

95.00

Integrated Wireless is intended to be sold within the European Economic Area only



1371 DIGI-MET® Depth gauges IP67



1

Model

- Stainless steel
- Inductive measuring system, protection class IP67
- DIN 862
- Locking screw
- LCD display 11 mm
- Measuring pin dia. 1.5 mm

Functions

- ON / OFF
- **Quick-Start**
- **Quick-Lock** (key lock)
- PRESET-Function (setting a numerical value)
- Set to zero at any point
- mm / inch switching

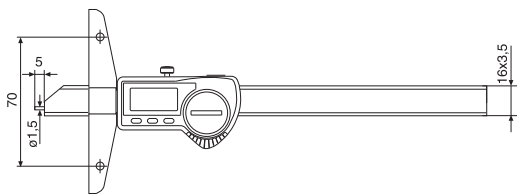
Delivery

- Plastic case



Product video

Measuring range	Measuring range		Length of beam	Reading		Error limit	Order no.	List price
	mm	inch		mm	mm			
▪	0 - 150	0 - 6	100	0.01	.0005	0.03	1371 416	388.00
▪	0 - 200	0 - 8	100	0.01	.0005	0.03	1371 418	426.00
▪	0 - 300	0 - 12	150	0.01	.0005	0.04	1371 422	475.00
▪	0 - 500	0 - 20	150	0.01	.0005	0.05	1371 428	547.00



Accessories

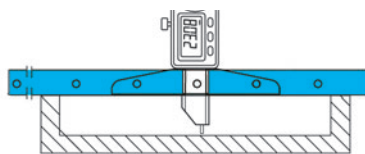
Battery, 3V-Lithium, CR 2032

Order no.	List price
0220 704	EUR 3.90

1271 Extension depth attachment base



1271 451

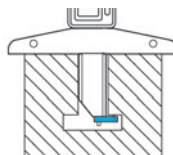


Measuring bridge length	Order no.	List price
200	1271 451	89.00
300	1271 452	103.00

1271 Measuring insert for distance measurements

Model

- To be attached to the measuring pin



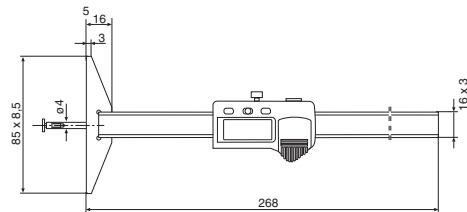
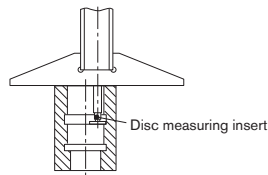
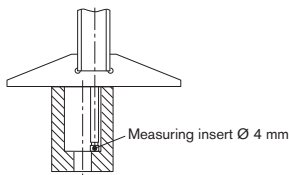
Order no.	List price
1271 455	EUR 59.00



1376 DIGI-MET® Depth gauge



Example of use



Model

- Stainless steel
- Protection class IP67
- LCD display 7.5 mm
- Locking screw
- Factory standard

Functions

- ON / OFF
- **Quick-Start**
- **Quick-Lock** (key lock)
- Set to zero at any point
- mm / inch switching
- Reversal of counting direction

- PRESET-Function (setting a numerical value)
- Variable data output RS 232 + Digimatic + USB

Delivery

- Wooden case
- Disc type insert Ø 7.5 x 1 mm
- Inserts Ø 4 mm, flat and spherical

Measuring range	Length of beam		Reading		Error limit	Order no.	List price
	mm	inch	mm	inch			
0 - 100	0 - 4	85	0.01	.0005	0.02	1376 514	517.00

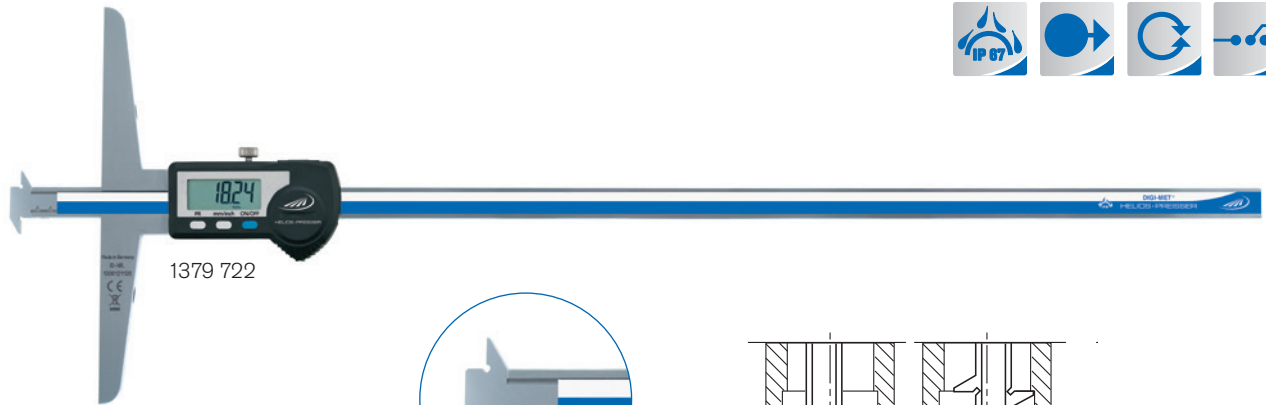


Accessories

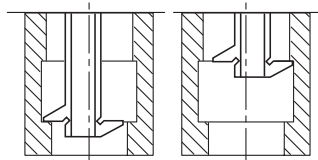
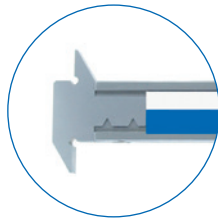
	Order no.	List price
Battery, 3V-Lithium, CR 2032	0220 704	3.90
Disc type measuring insert Ø 7.5 x 0.5 mm	1276 590	33.00
Disc type measuring insert Ø 7.5 x 1 mm	1276 591	18.80
Flat measuring insert Ø 4 mm	1276 592	18.00
Spherical measuring insert Ø 4 mm	1276 593	25.00
Data cable DATA VARIABLE to RS232	1997 501	50.00
Data cable DATA VARIABLE to digimatic	1998 501	64.00
Data cable DATA VARIABLE to USB	1998 720	72.00



1379 DIGI-MET® Depth gauges with interchangeable inserts



1



Model

- Interchangeable inserts for solving different measuring tasks
- Measuring base can be attached (optional, see accessories)
- Stainless steel
- Inductive measuring system, protection class IP67
- Factory standard

Functions

- ON / OFF
- Quick-Start
- Quick-Lock (key lock)
- PRESET-Function (setting a numerical value)
- Set to zero at any point
- mm / inch switching
- Variable data output RS 232 + Digimatic + USB

Delivery

- Wooden case
- With inserts for width and distance measurements, Order no. 1279 780
- More inserts and measuring base optional

▶▶	Measuring range		Length of beam mm	Reading		Error limit mm	Order no.	List price EUR
	mm	inch		mm	inch			
▪	0 - 300	0 - 12	150	0.01	.0005	0.03	1379 722	663.00
▪	0 - 500	0 - 20	150	0.01	.0005	0.03	1379 728	914.00

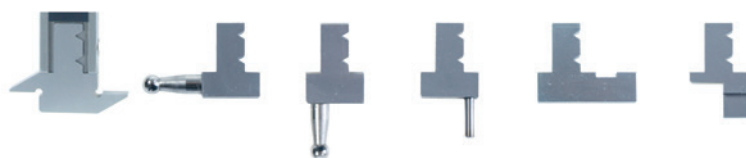


1998720

1997501

1998501

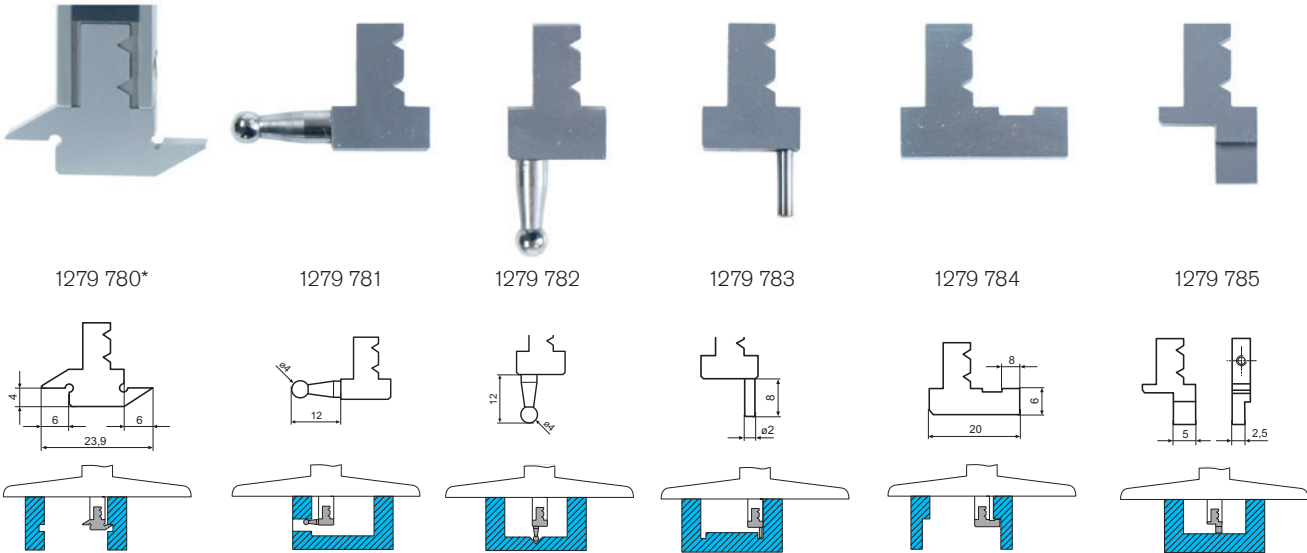
Accessories	Order no.	List price EUR
Interchangeable inserts made of stainless steel, hardened		
Battery, 3V-Lithium, CR 2032	0220 704	3.90
Replacement cylinder screw M2x6	1379 790	8.90
Data cable DATA VARIABLE to RS232	1997 501	50.00
Data cable DATA VARIABLE to digimatic	1998 501	64.00
Data cable DATA VARIABLE to USB	1998 720	72.00



More measuring inserts on page 78



1279 Interchangeable inserts made of stainless steel, hardened



	Description	Order no.	List price EUR
	Insert for width and distance measurements*	1279 780	114.00
	Insert with ball, angled	1279 781	114.00
	Insert with ball, straight	1279 782	114.00
	Insert with measuring pin	1279 783	114.00
	Insert with hook	1279 784	114.00
	Insert with straight measuring rod	1279 785	114.00

* Standard insert included in the delivery of the basic instrument

0279 Sliding measuring base made of stainless steel



Delivery

- Bolts included

	Dimensions mm	Order no.	List price EUR
	300 x 16	0279 722	272.00
	400 x 16	0279 723	284.00
	500 x 16	0279 724	296.00

Accessories

	Order no.	List price EUR
Fixture for sliding measuring base, two parts	0279 792	21.50



1375 DIGI-MET® Small depth gauge



1

Model

- Beam made from stainless steel, hardened
- Aluminium body black anodized
- Protection class IP67
- LCD display 7.5 mm
- Factory standard
- Measuring pin Ø 2 mm

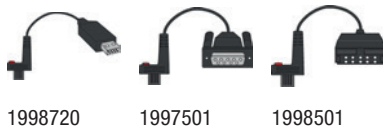
Functions

- ON / OFF
- **Quick-Start**
- **Quick-Lock** (key lock)
- Set to zero at any point
- PRESET-Function (setting a numerical value)
- mm / inch switching
- Variable data output RS 232 + Digimatic + USB

Delivery

- Wooden case

Icon	Measuring range		Length of beam	Reading		Error limit	Order no.	List price
	mm	inch	mm	mm	inch	mm		EUR
	0 - 25	0 - 1	48	0.01	.0005	0.02	1375 502	249.00



Accessories

	Order no.	List price
		EUR
Battery, 3V-Lithium, CR 2032	0220 704	3.90
Data cable DATA VARIABLE to RS232	1997 501	50.00
Data cable DATA VARIABLE to digimatic	1998 501	64.00
Data cable DATA VARIABLE to USB	1998 720	72.00



1378 DIGI-MET® Depth gauges for one-handed operation



Model

- Stainless steel
- Inductive measuring system, protection class IP67
- Locking screw
- Factory standard
- Constant measuring force through spring pressure
- Measuring pin with thread M 2.5 for exchangeable measuring inserts for core hole bores, also compatible with dial gauges inserts (see No. 0710) for depth measurement
- Measuring inserts for core hole bores (for additional costs) see table

Functions

- ON / OFF
- **Quick-Start**
- **Quick-Lock** (key lock)
- Set to zero at any point
- mm / inch switching
- PRESET-Function (setting a numerical value)
- Variable data output RS 232 + Digimatic + USB

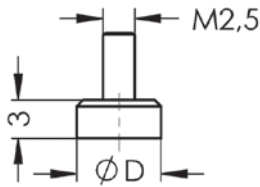
Delivery

- Ball measuring insert for depth measurement

Marked *	Marked *	Measuring range		Reading		Error limit	Order no.	List price
		mm	inch	mm	inch	mm		EUR
		0 - 60	0 - 2.4	0.01	.0005	0.02	1378 505	788.00
		0 - 100	0 - 4	0.01	.0005	0.02	1378 508	848.00



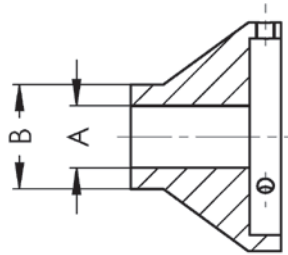
1278 Measuring inserts



☒	☒	Thread size mm	Core diameter mm	Diameter mm	Order no.	List price EUR
		M 16 x 1.5	14.38	14.32	1278 923	28.10
		M 16 x 1.0	14.92	14.87	1278 924	28.10
		M 12 x 1.25	10.65	10.59	1278 936	28.10
		M 12 x 1.0	10.92	10.87	1278 938	28.10
		M 10 x 1.0	8.92	8.87	1278 940	28.10
		M 10 x 0.75	9.19	9.13	1278 942	28.10
		M 8 x 1.0	6.92	6.87	1278 944	28.10
		M 8 x 0.75	7.19	7.14	1278 946	28.10
		M 6 x 0.75	5.19	5.14	1278 948	28.10
		M 5 x 0.5	4.46	4.41	1278 950	28.10
		M 16	13.84	13.79	1278 952	28.10
		M 12	10.11	10.05	1278 954	28.10
		M 10	8.38	8.32	1278 956	28.10
		M 8	6.65	6.59	1278 958	28.10
		M 6	4.92	4.87	1278 960	28.10
		M 5	4.13	4.08	1278 962	28.10
		16 pcs set			1278 930	413.00

1

1278 Reduction piece



☒	☒	A mm	B mm	Order no.	List price EUR
		6	12.00	1278 912	114.00
		9.5	16.00	1278 916	114.00
		15	20.00	1278 920	114.00